



الميرة  
almeera

مطابخ . خزائن . مغاسل  
Kitchens . Wardrobes . Vanities



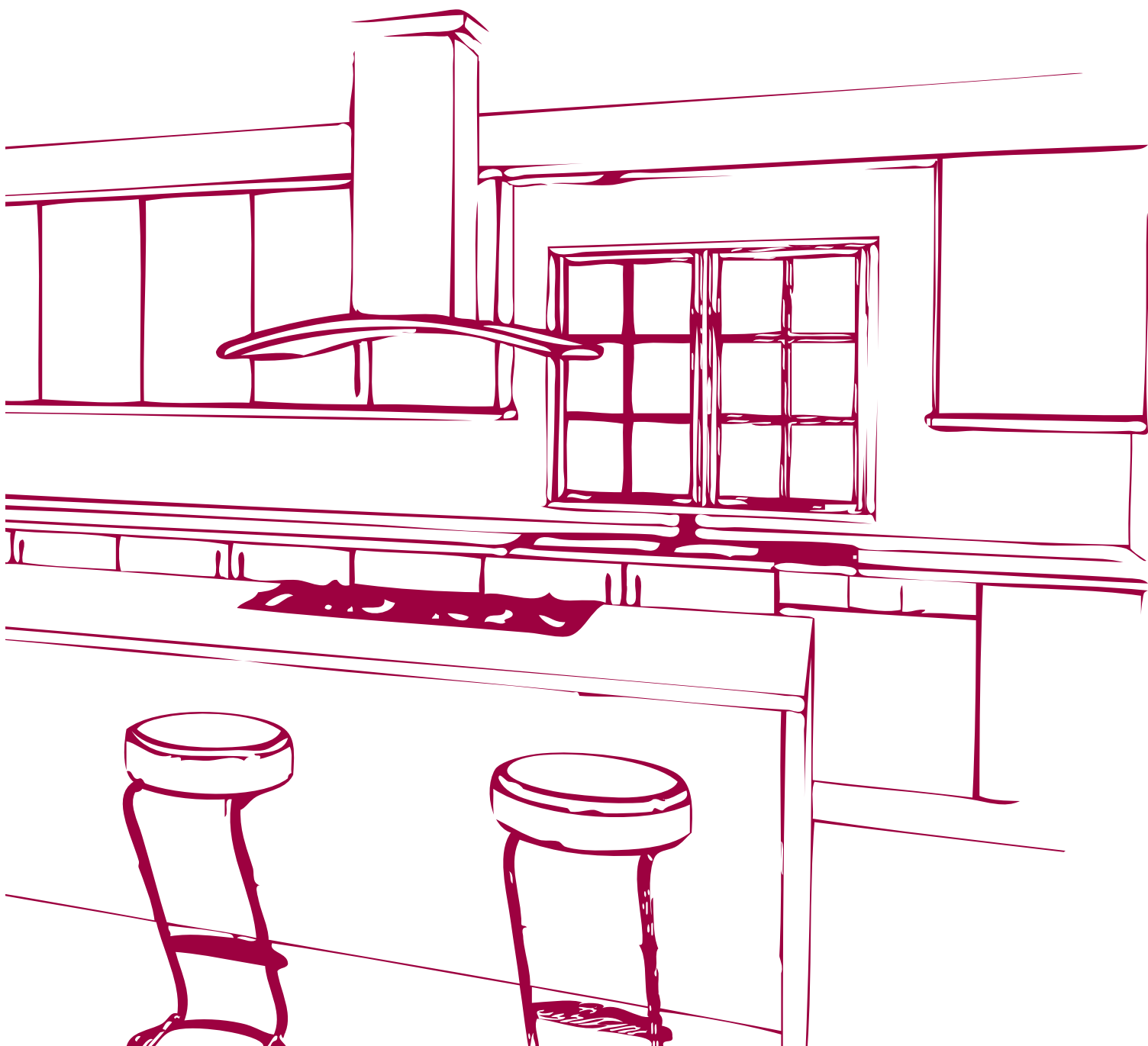
PREQUALIFICATION



الميرة  
almeera

مطابخ . خزائن . مغاسل  
Kitchens . Wardrobes . Vanities

جودة لكل نمط حياة  
Quality for every lifestyle



## Profile

Al Meera is one of the Middles East's leading manufacturers of kitchen, wardrobe, and vanity systems with the capacity of producing 10,500 kitchens and 50,000 wardrobes per year. The company utilizes state of the art, German equipment to facilitate and improve the production process. It uses quality raw materials and top of the line fittings imported directly from first class producers to ensure the highest standard of its products at the most reasonable price. It is backed up by a specialized team of over 33 years of experience. Al Meera is proud to be the only kitchen, wardrobe, and vanity producer in the UAE that locally produces European standard quality products that can cater to all tastes with more than 80 different colors and designs.

Al Meera's services include: designing and consulting/ manufacturing and installing/ maintaining and managing.

**Our mission is to provide high quality, elegant, and functional kitchen, wardrobe, and vanity systems at the most reasonable price in order to build long term mutually beneficial relationships with all our clients.**

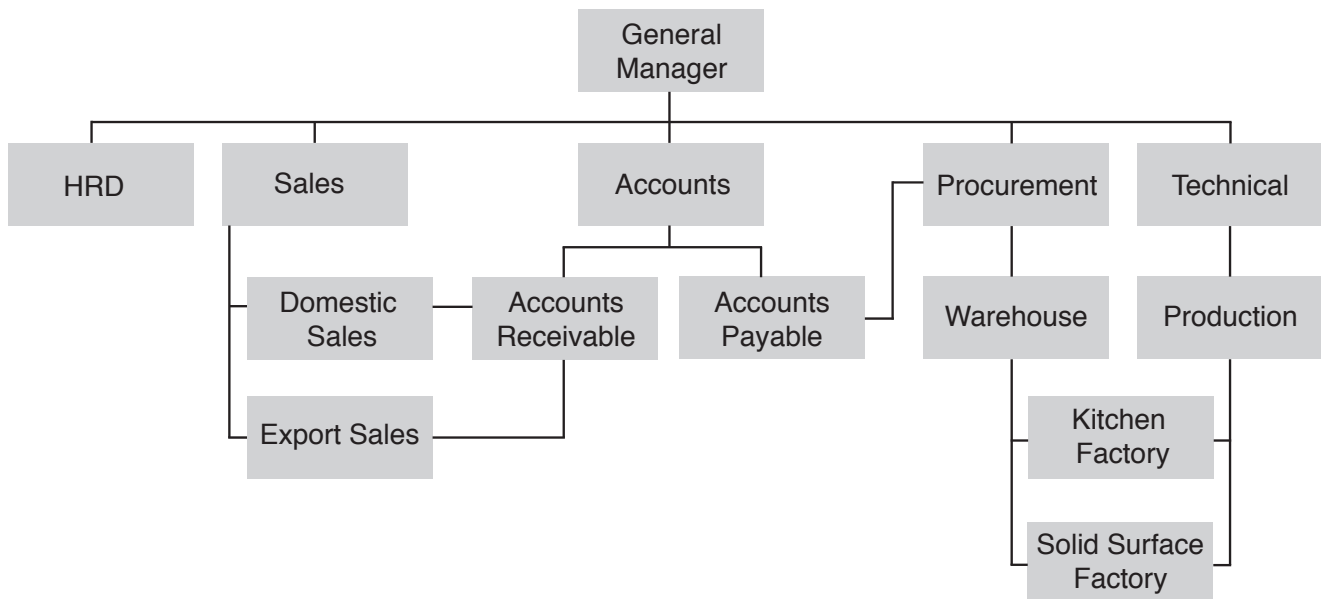
## ملف تعريف

تعتبر الميرة من الشركات الرائدة في الشرق الأوسط في مجال تصنيع المطابخ والخزائن والمغاسل ، حيث تتمتع بطاقة إنتاجية سنوية تفوق ١٠,٥٠٠ مطبخاً و ٥٠,٠٠٠ خزانة. وتستعمل أحدث المعدات الألمانية لتسهيل و تحسين عملية الإنتاج، كما أنها تستخدم أجود المواد الخام وأفضل التجهيزات المستوردة مباشرة من كبرى الشركات المصنعة لضمان تحقيق منتجاتها لأعلى المعايير بأنسب الأسعار. يدعم الشركة فريق متخصص في عمله يتمتع بخبرة مكثفة تزيد عن ٣٣ عام. تفخر شركة الميرة بكونها المنتج الوحيد للمطابخ والخزائن والمغاسل في الإمارات العربية المتحدة الذي ينتج محلياً منتجات تضيء معايير الجودة الأوروبية و تلبى كافة الأذواق بأكثر من ٨٠ لون و تصميم مختلف.

تتولى شركة الميرة بنفسها التصميم والاستشارات/التصنيع والتركيب/الصيانة والإدارة.

إن المهمة التي نسعى لتحقيقها تتمثل في إنتاج مطابخ وخزائن ومغاسل تتمتع بالجودة العالية و الأنافة والعمليّة بأنسب الأسعار لبناء علاقة طويلة الأمد تنطوي على المصلحة المتبادلة مع كافة زبائننا.

## Organizational Chart



## Quality Management and Product Support

### Quality Assurance personnel:

- 1 Technician for actual testing of appliances electrical component
- 1 Production supervisor and 1 Foreman to check quality of countertops and carcasses during and after production process
- 1 Site supervisor to check appropriateness and quality of the installed kitchen, wardrobe and vanity units

### Sampling Method Used for Inspection:

- Kitchen, wardrobe and vanity units undergo thorough inspection during and after the production and installation process.
- 5% of received electrical appliances from suppliers are randomly check by qualified technician

### Percentage for Reject Rate (Installation):

- 0.10% for kitchens, wardrobes and vanities

### Product Support and Warranty:

- Al Meera installed kitchen, wardrobe and vanity comes with 1 year warranty and 5 years for accessories and moving parts. All materials and parts required for maintenance for kitchen, wardrobe and vanity units are available for a minimum of 5 years from date of installation.





# Bureau of Assessment Services

Managing Assurance with Confidence

## Certificate of Registration

This is to certify that

### Al Meera Kitchens LLC

P.O. Box: 49252, Ras Al Khor, Dubai, United Arab Emirates.

has been assessed by Bureau of Assessment Services and hereby attests that the organization complies with the requirements of Quality Management System in accordance with

## ISO 9001:2008

The Quality Management System is applicable to:

**Manufacturing, Installation & Maintenance of Kitchen & Wardrobe Cabinets, Vanity Units, Accessories and Appliances.**

[EA/NACE: 23/31.02]

Certificate issue date : 26-October-2014  
Certificate valid till : 25-October-2017  
Certificate No : AE-BAS-Q0002516

  
Certification Manager  
Bureau of Assessment Services

1<sup>st</sup> Surveillance  
October-2015

2<sup>nd</sup> Surveillance  
October-2016

This certificate is validated through  
annual surveillance



Further clarification regarding the scope of the certificate and the applicability of ISO 9001:2008 requirements may be obtained by consulting the organization.  
This certificate remains valid while the holder maintains the management system in accordance with the standard above, which will be audited by Bureau of Assessment Services through surveillance audits. This certificate remains the property of Bureau of Assessment Services. Lack of fulfillment of conditions as set out in the certification agreement may render this certificate invalid.  
Issuing Country: Bureau of Assessment Services LLC, P.O. Box: 116898, Al Karama, Dubai, United Arab Emirates.





#### QUALITY POLICY

As part of its ongoing commitment to excellence **Al Meera Kitchens LLC** are committed to supply the highest quality across all the company's business areas.

By consistently providing products/services that meet or exceed consumer expectation and international standards, we will develop user loyalty and so achieve strong business performance in the field of **"Manufacturing, Installation, Maintenance & Retail Sale of Kitchens, Wardrobes, Vanities, Doors, Franke and Accessories."**

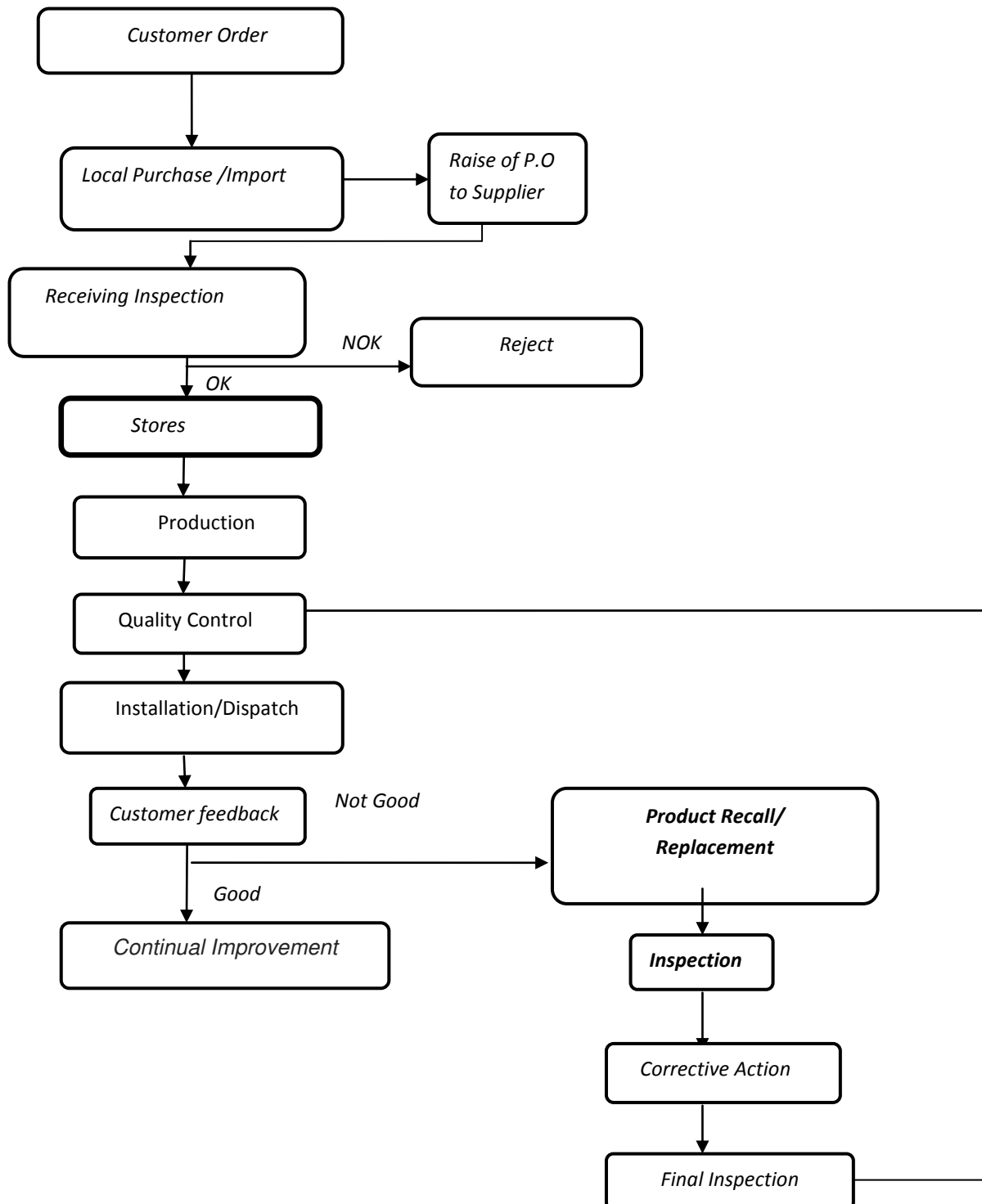
All employees are expected to help the company attain high quality standards. It is company policy to:

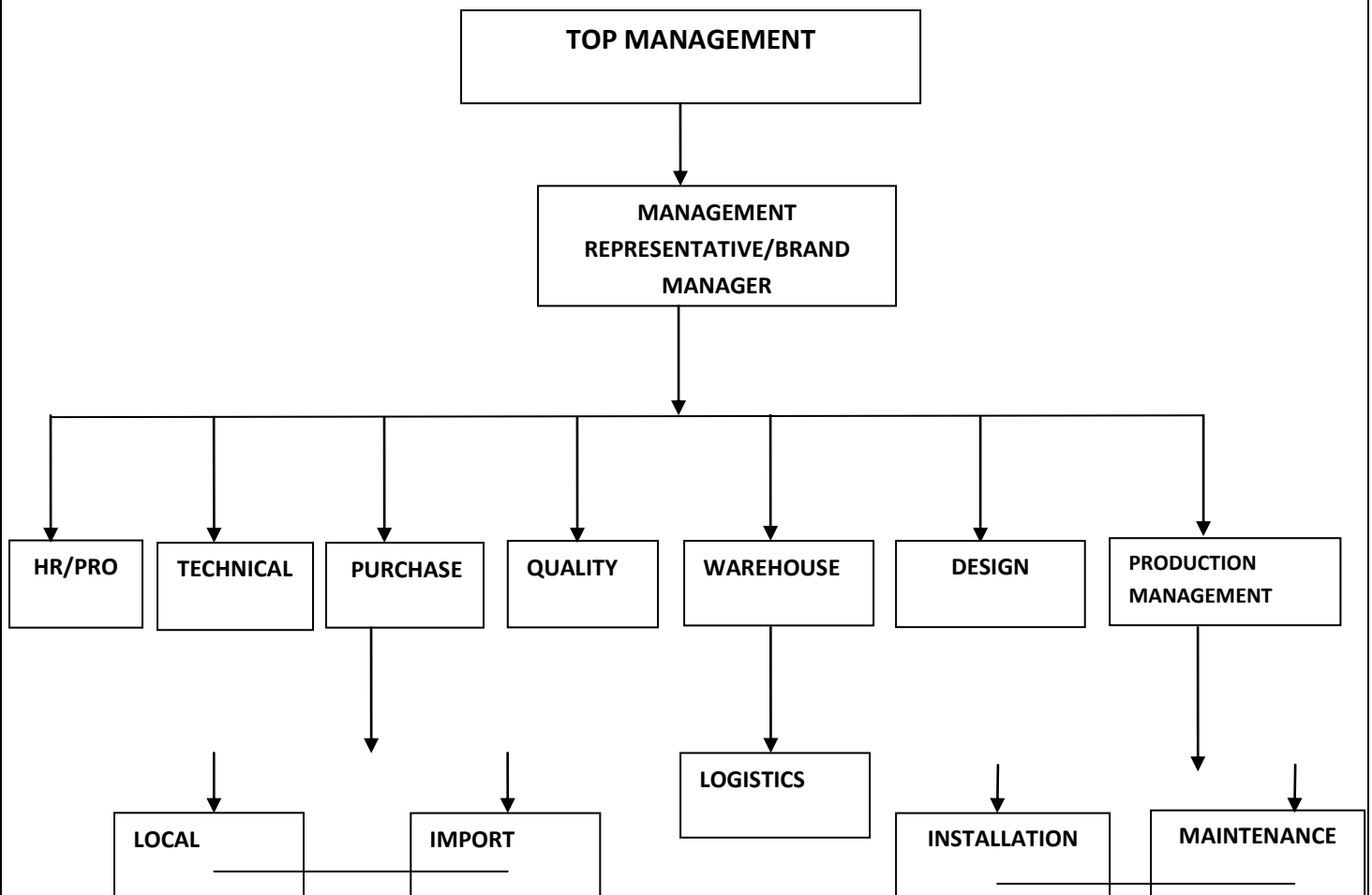
- ❖ Maintain and keep records of a quality management system in accordance with international standards, regulations and directives
- ❖ Ensure all staff are fully trained and understand their role providing quality products and good customer service
- ❖ Provide products/services which fully meet customer requirements
- ❖ Develop or acquire products/services which are Cost effective, safe and reliable
- ❖ Make sure the services and materials from suppliers are of consistent and sufficient in quantity and quality
- ❖ Strive for continual improvement in performance, underpinned by the necessary financial resources, and highlight objectives and progress through internal and external communications.



**MIKAIL AJI**

**General Manager**







### 1.0 **PURPOSE**

Purpose of this procedure is to define the guidelines for the inspection and testing activities to verify conformance to specified requirement.

### 2.0 **SCOPE**

Scope of this procedure covers inspection of all Raw materials, packaging materials and Engineering items from receipt stage to final inspection stage.

### 3.0 **DEFINITION**

MRR - Material Receiving Report

### 4.0 **REFERENCES**

Quality System Manual - ISO 9001 – 2008 ( 7.1 and 8.1 )

### 5.0 **RESPONSIBILITIES**

**On-line QC activity on production line** - QC Inspectors

**Receiving Inspection at Engg. dept.**

**Overall responsibility**

**Receiving inspection** - Quality Engineer /

### 6.0 **PROCEDURE**

#### 6.1 **Receiving Inspection and Testing**

All the incoming raw materials and packaging materials etc. being checked as per procedure given below.

6.1.1 On receiving the raw materials and packaging materials the Store Keeper checks the quantity, packing etc. w.r.t. Purchase Order and prepares the Material Receiving Report (MRR).

6.1.2 The MRR is sent to the Quality Control Department.

6.1.3 On receiving the MRR, QC Inspector withdraws the sample & test the materials as per Inspection procedure

6.1.4 In case of exigency, QC personnel are authorized to release packaging materials by visual inspection.

### 6.1.5 Inspection of packaging materials

The applicable tests are done on the packing materials viz.: outer cartons, inner cartons, wrappers, printed materials etc. as per specifications.

### 6.1.6 Analysis of raw materials

After the sampling of raw materials, inspect & approve.

6.1.7 Analysis / Inspection results are recorded on the Quality Control Report. The results are compared with the specification. The material acceptance or rejection as the case may be is suitably indicated in MRR giving reference number of Quality Control report.

6.1.8 Generally, manufacturer's test certificates are not received along with the consignments. Where such test certificates are received the same would be forwarded to Quality Control Department/ Stores.

### 6.1.9 Engineering items

The received items are inspected for quantity and quality w.r.t specifications. On acceptance of locally procured spares the D.O is endorsed. In case of imported items, MRRs are prepared and signed towards acceptance / rejection

## 6.2 In-process inspection and testing

6.2.1 In process inspection is performed as specified in Product quality plans for the necessary parameters

6.2.3 Tests are performed at stages as specified in Product Quality Plan and results are communicated to the Production Dept.

6.2.4 A consolidated report for the in-process inspection activity is prepared on daily basis.

6.2.5 The nonconformity's are indicated on the daily reports and communicated to the Production / Management.

6.2.6 After nonconforming products are corrected, the same is subjected to re-inspection, in case of reprocessing without mixing with the regular batches.

6.2.7 Subjective elements like color etc. are checked against approved reference standards.

6.2.8 Process audits are conducted by the QC Personnel once/shift and recorded

### 6.3 Final inspection

6.3.1 The final product from the packing line is authorized for transfer to warehouse by the QC Personnel.

6.3.2 Final inspection is conducted as per schedule of analysis on the average sample collected for the day and cleared on daily basis

6.3.3 For customer generated requirements, once the contract is finalised, the QC department draws necessary specifications to meet the contract requirements and inform Production Department.

6.3.4 One packed product sample of each brand produced is collected from the days' production and inspected.

6.3.5 The records of final inspection are maintained in the Quality Department

6.3.6 In event of nonconforming result, the day's production is identified and quarantined for further action.

6.3.7 The accepted items are authorised for despatch to the warehouse through warehouse transfer note. The warehouse transfer note is authorised by Production/Stores Incharge.

### 6.4 Inspection Records

6.4.1 All inspection records are maintained to demonstrate conformance to specified requirement

6.4.2 All inspection records are endorsed by authorised personnel and indicate results of inspection as accepted or rejected.

6.4.3 In case of non - conformity, NCR is prepared so as to take necessary corrective action / disposition of non - conforming product

## 7.0 RECORDS

### 7.1 Quality Control Report

### 7.2 In process inspection records.

### 7.3 Daily QC report of finished products

SL.No	PROCESS	RESPONSIBILITY	DOCUMENT/RECORD
1.	Receive Signed LPO from the client	Sales Engineer	LPO
2.	Fill the client profile form if the client provides.	Sales Engineer	Profile from
3.	Issue new serial no to the project	Sales Department	Project File
4.	If necessary request for the site survey	Sales Engineer	Site Survey Requisition
5	Survey the site	Quantity Surveyor	Survey Report & Plot drawing
6.	Study the survey report & Plot Drawing and the drawings received from the client	Sales Engineer & Designer	----
9.	Create 2 dimensional or 3 dimensional drawing of the product	Draughtsman	2 D/3 D Drawings
10	Check the drawing against clients requirement and if its meets all requirements approve the drawing, if not revise the drawing	Sales Engineer & Designer	Approved Drawing
11	Validate the Drawing And Issue Controlled Drawings to concern departments	Design Engineer	Validated Drawing
12	Verify the design in the site , If required do the back analysis	Design Engineer	Planned vs achieved



INPUT	PROCESS	CONTROL	RECORD
1.	<b>Receive Enquiry:</b> <ul style="list-style-type: none"> <li>Receive enquiries through fax,email and post.</li> <li>Send the enquires to the Sales Department</li> </ul>	Admin	Enquires
2.	<b>Collect the Information from Client:</b> <ul style="list-style-type: none"> <li>Interview the Client and identify the need</li> <li>Assess the Site</li> <li>Quantity Survey</li> <li>Decline or Accept to work on enquires</li> </ul>	Sales/ Design Team	Layout drawing
3.	<b>Preparation of Approx. Design:</b> <ul style="list-style-type: none"> <li>Preparation of forecasted design for proposal</li> <li>Check the design</li> <li>Approve the design</li> </ul>	Designer /Senior Interior Designer	3D Drawing/ Elevation Drawing/Furniture Drawing
4.	<b>Preparation of Estimation:</b> <ul style="list-style-type: none"> <li>Preparation of estimation based on the in house approved design</li> <li>Coordinate with Projects manager, Store in Charge and Purchase Officer to discuss the resources and their availability</li> </ul>	Purchase/ /Senior Interior Designer	Estimation Form
5.	<b>Review and Approval of Estimation:</b> <ul style="list-style-type: none"> <li>Review of Estimation</li> <li>Approval of Estimation</li> </ul>	Technical Team	Estimation Form
6.	<b>Preparation of Quotation:</b> <ul style="list-style-type: none"> <li>Preparation of Quotation based on the design and estimation and payment terms</li> </ul>	Technical Team	Quotation Form

INPUT	PROCESS	CONTROL	RECORD
8.	<b>Send Quotation to the Customer:</b> <ul style="list-style-type: none"> <li>Send the copy by Fax,Mail and through messenger</li> <li>Acknowledge the receipts</li> </ul>	Sales	Quotation
9.	<b>Negotiation:</b> <ul style="list-style-type: none"> <li>At Client Premises or through mail/phone.</li> <li>Discuss the proposed design,scope of work,time duration and payment terms</li> <li>If agreed receive the signed copy of quotation and letter of intend</li> </ul>	Admin	Revised Quotation
10.	<b>Project:</b> <ul style="list-style-type: none"> <li>Determine appropriate product selections based on needs</li> <li>Install as per Drawing</li> <li>Verify with the finalized drawing</li> </ul>	Installation & Production	Before & After Photograph

## ENVIRONMENTAL, HEALTH & SAFETY POLICY

Occupational health, safety of employees, and protection of the environment are our primary objective at Al Meera. Our aim is to have an injury free workplace with no incidents and no harm to the environment. We take this responsibility seriously and we believe that such an approach will generate and sustain significant environmental, social and financial benefits, thereby contributing to our objective of long-term sustainability.

Our EHS commitment:

- Comply with applicable EHS regulations and policies and communicate them in a clear manner.
- Ensure awareness and implementation of environmental protection, healthy and safety among all employees and those concerned by periodical training, display and communication of policy, and penalizing violators.
- Cooperate with the public, government and other concerned parties to develop appropriate regulatory and public policies that protect the environment and general health and safety.
- Work cooperatively with our suppliers, business partners, and clients to ensure their support to EHS policy.
- Assess EHS impacts before the commencement of any project on both a design and production level.
- Prevent pollution, recycle materials, and reduce the use and release of toxic and hazardous material as much as possible within a practicable scope.
- Take appropriate measures and precautions to avoid workspace injuries and illnesses and provide a risk-free and safe work environment.
- Continue to improve our EHS systems and policies as a vital part of our operation strategy.



Michel Aji  
General Manager  
Dubai March 2015







## رخصة صناعية Industrial License

### تفاصيل الرخصة / License Details

License No.	540727	رقم الرخصة
Company Name	AL MEERA KITCHENS (LLC)	اسم الشركة
Trade Name	AL MEERA KITCHENS (LLC)	الإسم التجاري
Legal Type	Limited Liability Company(LLC)	الشكل القانوني
Expiry Date	29/12/2018	تاريخ الإصدار
D&B D-U-N-S * No	534423392	رقم الرخصة الام
Register No.	61359	عضوية الغرفة
	تاريخ الإنتهاء	Issue Date
	30/12/2002	30/12/2002
	الرقم العالمي	Main License No.
	540727	540727
	رقم السجل التجاري	DCCI No.
	78595	78595

### الاطراف / License Members

Share / الحصص	Role / الصفة	Nationality / الجنسية	Name / الإسم	No./رقم الشخص
	مدير / Manager	Syria / سوريا	mikail ghussn azi / مخايل غصن عجي	61208

### نشاط الرخصة التجارية / License Activities

Kitchen Cabinets & Fixtures Manufacturing صناعة اثاث وتركيبات المطابخ

### العنوان / Address

Phone No	971-4-2953978	تليفون	P.O. Box	49252	صندوق بريد
Fax No	971-4-2950388	فاكس	Parcel ID	613-1194	رقم القطعة
Mobile No	971-50-7217955	هاتف متحرك			مصنع ملك دائرة العقارات (حكومة دبي) - راس الخور الصناعية

### الملاحظات / Remarks

Print Date 02/01/2018 11:02 تاريخ الطباعة

Receipt No.

رقم الإيصال

يمكنك الآن تجديد رخصتك التجارية من خلال الرسائل النصية القصيرة، أرسل رقم الرخصة إلى 6969 (دو/اتصالات) للحصول على إذن الدفع.

Now you can renew your trade license by sending a text message (SMS). Send your trade license number to 6969 (Du/ Etisalat) to receive payment

وثيقة إلكترونية معتمدة وصادرة بدون توقيع من دائرة التنمية الاقتصادية. لمراجعة صحة البيانات الواردة في الرخصة برجاء زيارة الموقع [www.dubaided.gov.ae](http://www.dubaided.gov.ae)

Approved electronic document issued without signature by the Department of Economic Development. To verify the license kindly visit [www.dubaided.gov.ae](http://www.dubaided.gov.ae)





## Commercial License

## رخصة تجارية

License No	:	CN-1470820	:	رقم الرخصة
Unified ID for ADCCI	:	313339	:	الرقم الموحد لمعشورة الترقية
Legal Form	:	UAE Branch - Dubai	:	النسخت القانوني
Trade Name	:	Al Meera Kitchens - Branch Of Abu Dhabi 1	:	الاسم التجاري
Establishment Date	:	12/03/2013	:	تاريخ تأسيس المنشأة
Issue Date	:	11/06/2017	:	تاريخ الاصدار
Expiry Date	:	10/06/2018	:	تاريخ الإنتهاء

الرقم No.	الوصف Description	الجنسية Nationality	نوع الشراكة Partner
450727	الميرة للمطابخ	دولة الإمارات العربية المتحدة United Arab Emirates	مالك Owner

Commercial Activities : الأنشطة التجارية  
- Retail Sale Of Kitchens And Restaurants Equipment And Outfits  
- بيع معدات المطاعم و المطابخ و لوازمها - بالتجزئة  
Address : جزيرة أبوظبي، النادي السياحي - C48 - الحوض E16.01 - معرض رقم 1، المالك - سعيد عبدالله ناصر الجنيبي  
العنوان

تمتد غرفة أبوظبي بموجب القانون رقم 27 لعام 2005 بأن المنشأة المذكورة أعلاه قد سجلت لدينا  
Abu Dhabi Chamber certifies that the above mentioned establishment has been registered in accordance with the law No. 27 of 2005

وثيقة معتمدة وصادرة بدون توقيع أو ختم من دائرة التنمية الاقتصادية - أبوظبي. للتحقق من صحة البيانات الواردة في الرخصة يرجى زيارة الموقع  
Approved document issued without signature or stamp by the Department of Economic Development - Abu Dhabi. To verify the license kindly visit <http://www.ded.abudhabi.ae>

This Document is Considered As Commercial Register

تعتبر هذه الوثيقة بمثابة سجل تجاري



غرفة أبوظبي  
ABU DHABI CHAMBER





الميرة  
almeera

مطابخ . خزائن . مغاسل  
Kitchens . Wardrobes . Vanities



## Al raha gardens Community



### AL RAHA GARDENS COMMUNITY

Situated opposite Al Raha Beach with convenient access to the main Abu Dhabi highway and covering an area of over 1 million square meters, Al Raha Gardens provides residents with a quiet safe and picturesque environment. Al Raha Gardens is the first freehold property development dedicated to UAE Nationals in Abu Dhabi and the UAE.

Units range from spacious 3-bedroom townhouses to luxurious 5-bedroom villas, combining traditional Arabian-style design with modern day convenience.

Aldar's Estates Management team provides the entire range of facilities management and property management services to the residents of Al Raha Gardens.





## Jumeirah Park - Phase 6/2

Jumeirah Park is a family oriented residential Nakheel development in the heart of the desirable Jumeirah district. Focused around a series of eco-friendly green spaces and parks, the development is ideal for families and those who enjoy the outdoors.

Then development of Jumeirah as a prestigious residential and retail destination contributes to Nakheel's vision of Dubai as a provider of world class tourism opportunities. Jumeirah Park is a key aspect of this ongoing development. Residents and visitors to Jumeirah Park will find themselves located at the center of one of Dubai's most vibrant areas, which include the iconic Nakheel development Palm Jumeirah, The World, Marina Residences, Discovery Gardens and Ibn Battuta Mall.

Al Meera Kitchens was commissioned for the construction of Kitchen, Wardrobe and Vanity for 107 Luxury Villas for Phase 6/2 of this prestigious project and has once again prove in the industry its status as leader of high quality products in the field.





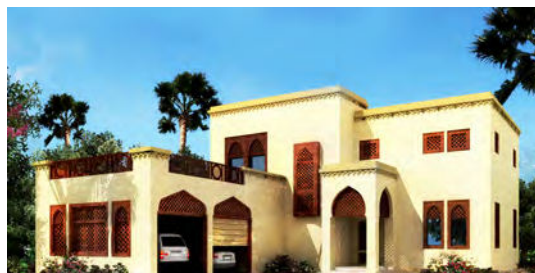


## Jumeirah Park - Phase 1A

Jumeirah Park is a family oriented residential Nakheel development in the heart of the desirable Jumeirah district. Focused around a series of eco-friendly green spaces and parks, the development is ideal for families and those who enjoy the outdoors.

Then development of Jumeirah as a prestigious residential and retail destination contributes to Nakheel's vision of Dubai as a provider of world class tourism opportunities. Jumeirah Park is a key aspect of this ongoing development. Residents and visitors to Jumeirah Park will find themselves located at the center of one of Dubai's most vibrant areas, which include the iconic Nakheel development Palm Jumeirah, The World, Marina Residences, Discovery Gardens and Ibn Battuta Mall.

Al Meera Kitchens was commissioned for the construction of Kitchen, Wardrobe and Vanity for 247 Luxury Villas for Phase 1A of this prestigious project and has once again prove in the industry its status as leader of high quality products in the field.





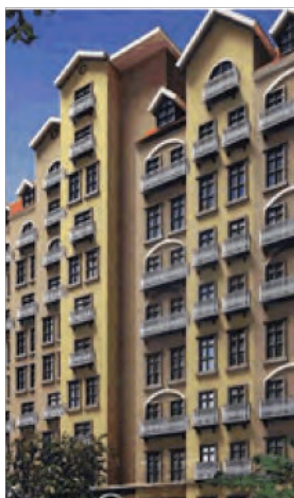
## Discovery Gardens- Zen Gardens

The epitome of serenity, harmony and simplicity, this community offers real food for the soul. Its clutter-free landscaping features an artful mix of materials, all of which work together to create far more than just a living space.

This cocktail of top quality apartments, simple landscaping and rock, sand and water features inspires a sense of stillness and calm where the mind can be opened and the imagination freed, making it the perfect place to unwind after the whirlwind pace of an intense day in the office.

Originally awarded the supply and installation of Kitchens and Wardrobes to other kitchen producer, the poor quality and workmanship of the installed units has resulted in the termination of the works of the kitchen producer. With the reputation establish by Al Meera for its Contemporary Gardens project, Nakheel has again require the services of Al Meera to complete the last phase of ZEN Gardens.

Al Meera had supplied 682 kitchens and 848 wardrobe units of the ZEN Gardens project.







## Discovery Gardens- Contemporary Gardens

Smart, fresh and impossibly stylish, this is every inch the modern garden. Clean lines and a crisp design emphasizing simplicity and subtle sophistication define the avant-garde spirit of this community. Space, colour and shape combine to create a sleek order that reflects the needs and aspirations of today's most polished tastes. A far cry from any traditional sense of 'garden', the abstract concepts that inspired these hedges, paths and paved areas have created a living space where real style meets refined intellect.

Contemporary Gardens comprises of 27 exquisite buildings. Out of the 27 buildings lies 1,350 refined kitchens of Al Meera. Quality and Elegance at its best makes Al Meera the preferred kitchen company in the UAE. The Contemporary design of Al Meera Kitchens has been a key factor in acquiring the trust and confidence of the client Nakheel and contractor Pauling Middle East.





## Jumeirah Park- Phase 2 and 2A

Jumeirah Park is a family orientated residential Nakheel development in the heart of the desirable Jumeirah district. Focused around a series of eco-friendly green spaces and parks, the development is ideal for families and those who enjoy the outdoors.

The development of Jumeirah as a prestigious residential and retail destination contributes to Nakheel's vision of Dubai as a provider of world class tourism opportunities. Jumeirah Park is a key aspect of this ongoing development. Residents and visitors to Jumeirah Park will find themselves located at the centre of one of Dubai's most vibrant areas, which include the iconic Nakheel developments Palm Jumeirah, The World, Marina Residences, Discovery Gardens, and Ibn Battuta Mall.

Al Meera Kitchens was commissioned for the construction of Kitchen, Wardrobe and Vanity for 525 Luxury Villas for Phase 2 & 2A of this prestigious project and has once again prove in the industry its status as leader of high quality products in the field.







## Falcon City of Wonders

In the modern world, Dubai has emerged as a city with no parallel. A city that embraces modernity while proudly maintaining its rich cultural heritage and unique identity. The tranquil trade and fishing village that transformed itself into one of the world's most modern cities holds places of pride for all who have come to know the land.

Today, a new project is designed to engrave Dubai's place in the minds and hearts of the world citizens, and is called the Falcon City of Wonders. This is the project that honors mankind through its various civilizations, a project that could inspire generations about the power of the human spirit. This is where the world will see its past, its present and its future. Al Meera is once again called to prove its quality and elegance work by the 366 Kitchens and 1638 Wardrobe for 366 Villas on the right outstretched wing of Falcon City of Wonders which symbolizes the spirit of leadership, pride and excellent qualities that the Falcon city of Wonders will embody.

The Falcon city will be a self-contained and multi-faceted residential, tourist and recreational destination formed after the wonders of the ancient and modern world. Al Meera is very proud to be a part of making this wonderful Falcon City of Wonders.





## Dubai Investment Park- Ritaj Residence (11 Towers)

A residential community designed for a better way of life, Ritaj is ideally located in the heart of Dubai Investments Park within easy access of Dubai's largest trade zone, the Jebel Ali Free Zone.

A complete community, this low-rise (G+5) development has been planned to include a community centre with retail areas, restaurants and cafes, state-of-the-art medical facilities as well as a mosque.

In 2010, Al Meera has successfully handover its kitchen and wardrobe units for 2023 apartments of this prestigious residential towers







### The Pearl Qatar Sabban Towers (3- Towers)

The atmosphere of the Riviera within the warm waters of the Arabian Gulf. A rediscovered island off the coast of one of the world's most rapidly expanding economies. An investment in a place of outstanding beauty and cosmopolitan charm. This is The Pearl-Qatar, an island, which will redefine an entire nation; a destination of qualities that are unique in the region.

The Pearl-Qatar will be talked about around the world. It is founded on a determination to position Qatar as a place of superlatives - a country that welcomes guests with openness and friendship and encourages investment for all in a location of incredible potential.

Our company is proud to be part of this island paradise. Thanks to Sabban Properties for giving us the opportunity to supply and install 662 Kitchens, 1,538 Vanity Units and 1,334 Wardrobes. Our works had been completed in July of 2009.





## Medina Centrale

As its name suggests, Medina Centrale is the 'town centre' of The Pearl-Qatar, offering a very different residential, shopping and leisure experience compared to other precincts. Essentially a low-rise development based around a town square and adjacent streets, it will feature numerous parks and open spaces, all of which will link and serve nearby residential areas and make for both a lively environment and a place for celebrations. In addition to the nearby stores and restaurants of Porto Arabia, there'll be a central shopping zone with a full range of retail and community services.

A huge selection of food and beverage outlets will be located in the central plaza and along the major north-south boulevard within the development. As well as an exclusive yacht club and a spa at the marina, a hand-picked selection of shops will serve the community in style. A multi-screen cinema and many other facilities are also planned, all within easy reach.

With a buzz all of its own, Medina Centrale perfectly complements the other precincts at The Pearl-Qatar, in addition to being a hugely desirable place to live.





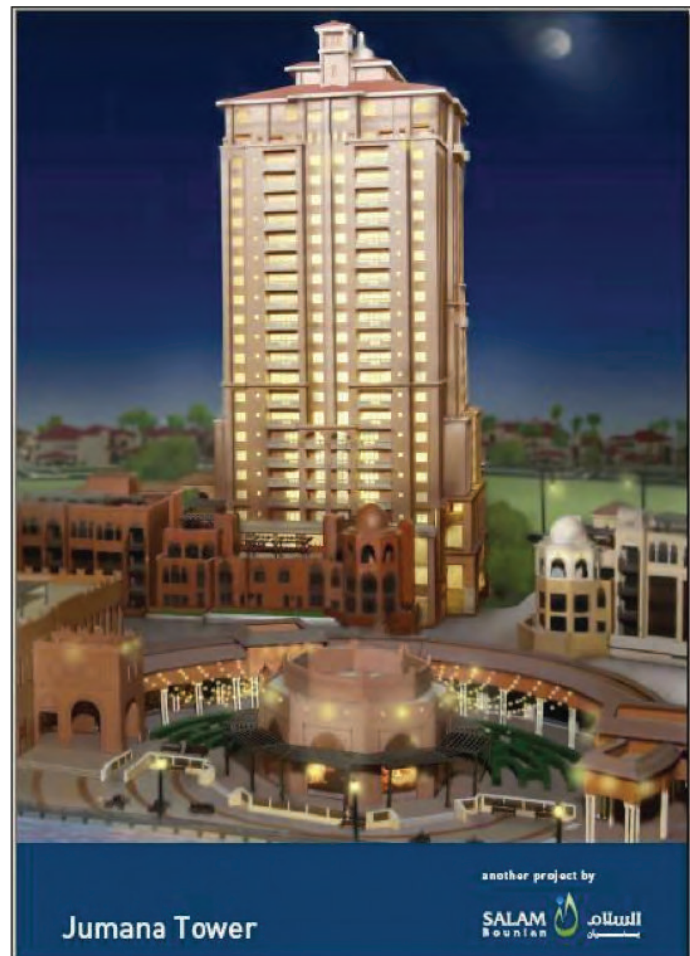
## Jumana Tower

Developed on Plot 16B at Porto Arabia in a very prominent position, the closest to Ras Croisette Peak at the Southern Entrance of the Marina to the open sea, Jumana is a residential tower of 28 floors which will include 4 floors of parking, 1 mezzanine floor, 1 amenity floor, 20 floors of exclusive residential apartments and 2 roof- top floors.

The 250 unique apartments, crafted with elegant luxurious finishes and differentiated by unique quality value added services, overlook the Porto Arabia marina and are surrounded by palm lined golden beach

Due to its location and internal flats layouts, Jumana residents and apartment owners will enjoy breathtaking and unique views from each side of the building without any view restrictions.

Al Meera is proud to be part of this elegant luxurious tower and has successfully completed the hand over of the kitchens, wardrobes and vanities units in 2010





## MAJOR PROJECT LIST

PROJECT NAME	CLIENT	CONSULTANT	CONTRACTOR	Year Started	Year Completed	VALUE
JUMEIRAH PARK - PACKAGE 2 & 2A 525 LUXURY VILLAS, DUBAI	AL NAKHEEL PROPERTIES	DAR AL HANDASAH	PAULING MIDDLE EAST	Apr-09	Dec-12	25,465,125.00
THE PEARL QATAR SABBAN TOWERS (3 TOWERS) PARCEL 06	SABBAN PROPERTY INVESTMENT	GLOBAL DESIGN CONSULTANCY	AFRINA TRADING AND CONTRACTING CO.	Nov-07	Jun-11	21,636,517.43
DUBAI INVESTMENT PARK RITAJ RESIDENTIAL TOWER (11 TOWERS)	DUBAI INVESTMENT	AL JABAL ENGG. CONSULTANCY	ROBUST CONTRACTING CO.	Dec-08	Oct-11	21,312,943.00
JUMEIRAH PARK - PACKAGE 1A 247 LUXURY VILLAS, DUBAI	AL NAKHEEL PROPERTIES	DAR AL HANDASAH	S.S. LOOTAH CONTRACTING COMPANY	Nov-13	Jun-14	10,553,070.00
DISCOVERY GARDENS CONTEMPORARY CLUSTER, DUBAI	AL NAKHEEL PROPERTIES	ENGINEERING CONSULTANT GROUP	PAULING MIDDLE EAST	Nov-06	Mar-08	9,774,714.69
FALCON CITY OF WONDERS 366 LUXURY VILLAS PHASE 1, DUBAI	FALCON CITY OF WONDERS LLC	MIDDLE EAST ENGINEERING CONSULTANTS	PAULING MIDDLE EAST	Mar-08	Sep-10	8,093,008.56
JUMANA TOWER THE PEARL QATAR PARCEL 16B, QATAR	SALAM BOUNIAN DEVELOPMENT COMPANY	ARAB ENGINEERING BEUREAU	AFRINA TRADING AND CONTRACTING CO.	Nov-09	Jul-10	7,357,714.91
2 TOWERS - RESIDENTIAL/COMMERCIAL B+G+3P+18 ON PLOT 134-1072, DUBAI	SULTAN GROUP INVESTMENT	BH.NS ENGINEERING CONSULTANTS (BRUCE HENDERSON - NASSER AL SAFFARI)	SULTAN ABDUL RAHMAN CONTRACTING CO. (SARCO)	Mar-12	Dec-13	5,405,406.00
DISCOVERY GARDENS ZEN CLUSTER, DUBAI	AL NAKHEEL PROPERTIES	ENGINEERING CONSULTANT GROUP	AL SHAFAR TRANSPORT & CONTRACTING CO. LLC	Jul-07	Nov-07	5,159,884.50
C2 TOWERS G+25 DUBAI MARINA			GERMAN FURNITURE DESIGN	Mar-09	Jan-10	4,256,044.00
JUMEIRAH PARK - PACKAGE 6/2 107 LUXURY VILLAS, DUBAI	AL NAKHEEL PROPERTIES	DAR AL HANDASAH	AL SHAFAR CONTRACTING CO. LLC	Jul-12	Aug-13	3,936,216.00
92 LUXURY VILLAS DUBHAIL - QATAR	TALEB GROUP		QATAR INFRASTRUCTURE COMPANY WLL	Jul-13	Oct-13	3,215,060.00
2 RESIDENTIAL BUILDING 2B+G+7 NO.392-443(5P) DUBAI MARINA	EMIRATES 2020 REAL ESTATE	ARCHDOME CONSULTING ENGINEERS - DUBAI	DELTA EMIRATES CONTRACTING CO. LLC	Jan-10	Dec-10	3,104,945.00
AL RAHA GARDENS 136 LUXURY VILLAS, ABU DHABI	ALDAR PROPERTIES PJSC	GHD GLOBAL PTY. LTD.	CONSTRUCTION GENERAL CONTRACTING CONTRACTING HOUSE	Aug-12	Feb-13	3,090,000.00
JUMEIRAH LAKE DUBAI GLOBAL LAKE VIEW PLOT E1 , DUBAI	BEST HOMES EMIRATES CONSTRUCTION	W.S. ATKINS PLC	CHINA STATE CONSTRUCTION ENG. CORP.	May-08	Feb-10	2,412,915.64
DAMAS TOWER 2 TOWERS, DUBAI	MR. TAWHEED MOHAMMED TAHER AL MOHTADI	ADNAN SAFFARINI ENGINEERING CONSULTANTS	BIN ZAYED CONTRACTING	Aug-06	Jan-08	2,100,662.86
SHEIKH KHALIFA MEDICAL CENTER ABU DHABI	SHEIKH KHALIFA MEDICAL CENTER	*	ENGINEERING UNIT	Mar-11	Jun-12	2,000,000.00
BURJ AL SALAM TOWER (HOTEL/APPARTMENT/OFFICES), DUBAI	ABDUL SALAM ALRAFI GROUP	ERGA PROGRESS ENGINEERING CONSULTANTS	DUBAI CONTRACTING COMPANY	Apr-12	Aug-13	1,850,000.00
THE PEARL QATAR MEDINA CENTRALE CP/5-1, QATAR	UNITED DESIGN COMPANY	DAR AL HANDASAH	POWER LINE ENGINEERING QATAR W.L.L.	Sep-11	Dec-12	1,765,919.19
7 RESIDENTIAL BUILDINGS AL MAMZAR AND AL NAHDA, DUBAI	SHAIKH ZAYED BIN MANSOUR BIN ZAYED AL NAHYAN & H.E.E. SULTAN ALI	AL HASHMI CONSULTANT	AL HABTOOR ENGINEERING ENTERPRISES CO. LLC	Aug-07	Apr-08	1,407,189.18
RESIDENTIAL BUILDING 2B+G+7 MANKHOOL, DUBAI	MR. ABDUL RAHIM MOHD. AL ZAROONI	ARIF & BINTOAK CONSULTING, ARCHITECTS & ENGINEERS	TRANSEMIRES CONTRACTING	Dec-08	Mar-09	1,269,079.00
JUMEIRAH LAKE TOWERS DUBAI	AL WALEED REAL ESTATE	ADNAN SAFFARINI	AI FARAAH CONTRACTING	Jan-12	Jun-12	1,249,032.00
2 RESIDENTIAL BUILDINGS (2B+G+9) DUBAI LAND RESIDENTIAL COMPLEX	DURAR AL EMARAT PROPERTIES LLC	M/S. QHC ARCHITECTS & ENGINEERS	ALI & SONS CONTRACTING CO. LLC	Nov-09	Apr-11	1,186,000.00

PROJECT NAME	CLIENT	CONSULTANT	CONTRACTOR	Year Started	Year Completed	VALUE
RESIDENTIAL BUILDING 2B+G+M+7+GYM AL MURAQBAT, DUBAI	MOHAMED ABDUL KARIM ABOUL HASSAN AL ZAROONI	AL KHAWAJAH ENGG. CONSULTANCY	TEAM ENGINEERING ENTERPRISES LTD.	Apr-08	Sep-08	1,147,525.00
RESIDENTIAL BUILDING (B+G+7) AL SAFOUH FIRST, DUBAI	LT. COL. SAID SALEM SAID AL WAHAIBI	AL WAHA ENGG. CONSULTANTS	GOLDLINE CONTRACTING	Apr-07	Aug-08	1,078,597.00
RESIDENTIAL BUILDING (B+G+14+R) DUBAI SPORTS CITY	MR. ABDUL RAHMAN MOHD TAHER ALI & MR. ABDUL HALIM MUWAHID	M/S. QHC ARCHITECTS & ENGINEERS	UNITED ENGINEERING CONST. (UNEC) LLC	Nov-09	Dec-11	1,050,000.00
AL SHAIBA HOTEL & HOTEL APARTMENT 2 TOWERS (B+G+P+21) INT'L MEDIA PRODUCTION ZONE	AL SHAIBA HOTEL		AL MEEZAN CONSTRUCTION	Aug-12	Jan-13	1,041,597.00
RESIDENTIAL BUILDING (G+4) AL WARQAA FIRST, DUBAI	ABDULLAH AHMAD BIN FAHED	REFAAT MUSTAFA CONSULTANT	AL FAHED CONTRACTING CO.	Jul-13	Oct-13	960,000.00
PALM VIEW AT PALM JUMEIRAH DUBAI	AL NAKHEEL PROPERTIES	DAR AL HANDASAH	S.S. LOOTAH CONTRACTING COMPANY	Dec-13	Jun-14	960,000.00
AL BUSTAN TOWER (G+5P+16) DUBAI	AL BUSTAN INT. CO. LTD.	MAZAYA CONSULTING ENGINEERS	AL WATHBA BUILDING CONT. CO. LLC	Nov-06	Dec-06	928,474.00
RESIDENTIAL BUILDING (1U+G+11+2R) AL NAHDA 2nd, DUBAI	SALEM AL DHAHERI	ADNAN SAFFARINI ENGINEERING CONSULTANTS	JULFAR CONTRACTING LLC	Oct-11	Jun-12	909,500.00
RESIDENTIAL BUILDING (B+G+10+HC) AL WARSAN, Dubai	FATIMA INTERNATIONAL GROUP LIMITED	NATIONAL ENGINEERING BUREAU (NEB)	SOBHA CONTRACTING LLC	Aug-12	Dec-12	846,000.00
FALCON CITY OF WONDERS 28 LUXURY VILLAS, DUBAI	FALCON CITY OF WONDERS LLC	SHADID ENGINEERING CONSULTANTS	PIONEER A.M.C CONTRACTING LLC	Mar-12	Jun-12	839,244.00
RESIDENTIAL BUILDING TECOM-INTERNET CITY, DUBAI	ABDUL RAHMAN MOHD. TAHER WALI	AL AJMI ENGG. CONSULTANT	NARESCO CONTRACTING LLC	Dec-06	Dec-06	825,000.00
RESIDENTIAL BUILDING (B+G+6) AL BARSHA, DUBAI	GOV. OF DUBAI - REAL ESTATE DEPT.	AL TURATH ENGG. CONSULTANT	AL KHARBASH CONTRACTING	Jul-08	Dec-08	807,561.00
RESIDENTIAL BUILDING (G+2P+10 Typ.+Gym), AJMAN			BU HUMAID CONTRACTING CO	Jun-11	Dec-12	800,000.00
RESIDENTIAL BUILDING G+58+SERVICE+HP&G+10 PARKING	ADNAN SAFARINI	ADNAN SAFFARINI ENGINEERING CONSULTANTS	SUN ENGINEERING	Sep-09	Jun-10	765,000.00
RESIDENTIAL BUILDING TECOM PROPERTY ZONE AUTHORITY	MR. ABDULRAHMAN MOHD TAHER WALI	AL AJMI ENGG. CONSULTANT	GINCO GENERAL CONTRACTING LLC	Mar-07	May-07	760,000.00
RESIDENTIAL BUILDING (G+13), DUBAI	SHARAF GROUP	AL AJMI ENGG. CONSULTANT	NARESCO CONTRACTING	Feb-08	Dec-08	732,313.00
JUMEIRAH PARK - PACKAGE 5 & 5A 18 LUXURY VILLAS, DUBAI	AL NAKHEEL PROPERTIES	DAR AL HANDASAH	AL SHAFAR CIVIL ENGINEERING LLC	Oct-12	Dec-12	725,582.42
RESIDENTIAL BUILDING (B+G+10+HC) AL WARSAN, DUBAI	M/s. MARS ESTATES LTD.	M/s. NATIONAL ENGINEERING BUREAU	SOLANKI CONSTRUCTION CO. LLC.	Oct-10	Jun-11	711,015.00
RESIDENTIAL BUILDING (B+G+4) AL QUSAIS SECOND, DUBAI	MR. SAEED HAMAD MUSLEH JAMHOUR AL AHBABI	DESIGN CENTER ARCHITECTS& ENGINEERING CONSULTANTS	SUMER CONTRACTING LLC	Oct-09	Jul-10	691,933.50
FUTURE SCHOOLS - PHASE 3, PACKAGE 4 AL FOAA AL SAJNA, AL AIN	AL FARAA GROUP	KEO INTERNATIONAL	AL FARAA GENERAL CONTRACTING CO. LLC & WATES CONSTRUCTION INT'L	Feb-13	Jun-13	688,869.64
RESIDENTIAL BUILDING (2B+G+14+R floors) TECOM, DUBAI	ABDUL RAHMAN MOHD TAHER WALI	AL AJMI ENGINEERING CONSULTANTS	NARESCO CONTRACTING LLC (Al Ajmi 821)	Feb-12	Aug-12	684,160.00
RESIDENTIAL BUILDING (B+G+7) AL NAHDA 2ND, DUBAI	AHMED MOHAMMED SAID BIN SHAFAR	ARKIPLAN CONSULTING ARCHITECTS & ENGINEERS	AL SHAFAR NATIONAL CONTRACTING	Jan-13	Aug-13	682,200.00
RESIDENTIAL BUILDING (2B+G+6+R) AL BARSHA FIRST, DUBAI	MR. ISMAIL AQIL ABDUL RAHIM JANAHI	ARCHON ENGINEERS	ACT CONSTRUCTION CO.	Oct-08	Sep-11	672,000.00
RESIDENTIAL BUILDING (G+P+8TYP+H) INTERNATIONAL CITY PHASE 3, DUBAI	ABDULJALIL MAHDI MOHD AL ASMAWI	ADNAN SAFFARINI ENGINEERING CONSULTANTS	AL SARH CONTRACTING	Oct-13	Nov-13	670,000.00

PROJECT NAME	CLIENT	CONSULTANT	CONTRACTOR	Year Started	Year Completed	VALUE
RESIDENTIAL BUILDING (B+FLOOR+G+8) DUBAI SILICON OASIS, DUBAI	MR. AHMED ABDL MOETY ADEL MURAD	AL KHAWAJAH ENGG. CONSULTANCY	AL SALAM CONTRACTING	Aug-10	Nov-11	660,393.00
RESIDENTIAL BUILDING AL BARSHA, DUBAI	ABDUL HAMHED SEDDIQI		DUBAI CONTRACTING COMPANY	May-06	Aug-06	646,000.00
COMMERICAL BUILDING AL QUDRA, ABU DHABI	SEIF AL ALKETBY		CONSTRUCTION GENERAL CONTRACTING CONTRACTING HOUSE	Oct-12	Jul-13	625,000.00
PLAZA RESIDENTIAL COMPLEX OUD METHA, DUBAI	H.H. AL SHEIKH HAMDAN BIN RASHID BIN SAEED AL MAKTOUM	DEWAN AL EMARA	AL OROBA CONTRACTING CO.	Mar-09	Mar-09	610,717.00
ROLEX TOWER (OFFICE & RESTAURANT)	MR. ABDUL HAMIED SEDDIQI	SKIDMORE, OWINGS & MERRILL LLP	DUBAI CONTRACTING CO.	Apr-09	May-10	601,238.77
RESIDENTIAL & COMMERCIAL BUILDING (B+G+4), DUBAI	AL FAHED CONTRACTING CO.	RAFAAT MUSTAFA CONSULTING ARCHITECTS	AL FAHED CONTRACTING CO.	Mar-08	Apr-08	562,362.80
2-VILLAS (G+1+Servant Block) AL JURF, AJMAN	MOHAMMED & AHMED ABED RAHMAN AMIN AL SHURAFFA		MR. ABDUL RAHMAN AMEEN	Dec-11	May-12	550,000.00
RESIDENTIAL BUILDING AL KARAMA, DUBAI	DUBAI REAL ESTATE DEPT.	BILIOHA ENGINEERING	AL SHAFAR GENERAL CONT. CO. LLC	Nov-06	Nov-06	530,000.00
RESIDENTIAL BUILDING (G+7) AL MANKHOOL, DUBAI	MR. MOHAMMED SHARIF BUKHASH	ADNAN SAFFARINI ENGINEERING CONSULTANTS	SALEH CONSTRUCTIONS	Mar-07	Apr-07	520,000.00
4 STAR HOTEL (G+11) PORT SAIED, DUBAI	AHMED AL AWAR	ARCON CONSULTING ENGINEERS PTY. LTD.	KHALIFA AL TAJER	Dec-07	Mar-08	500,000.00
2 BUILDINGS (3B+G+M+10+GYM) PORT SAEED, DUBAI	SULTAN GROUP INVESTMENT	BH.NS ENGINEERING CONSULTANTS (BRUCE HENDERSON - NASSER AL SAEED)	SULTAN ABDUL RAHMAN CONTRACTING CO. (SARCO)	Dec-12	Apr-13	489,236.56
RESIDENTIAL BUILDING (2B+G+M+9 GYM) AL SABKHA, DUBAI	MR. MOHD. AMIN MOHD. SEDDIQI MOHD. AQIL AL KAZEM	M/S. DESIGN CENTER	ACT CONSTRUCTION CO.	Dec-10	Oct-11	480,000.00
6 VILLAS (G+1) & SHOWROOM (G+1) UMM SUQEIM, DUBAI	MR. ABDULLAH AHMAD MOHD BIN FAHED	REFAAT MUSTAFA CONSULTING ARCHITECTS	AL FAHED CONTRACTING CO.	Jan-09	Mar-09	475,000.00
RESIDENTIAL BUILDING AL NAHDA, DUBAI	MR. AL SAWAS	ADNAN SAFFARINI ENGINEERING CONSULTANTS	KHAIRALLAH CONT. COMPANY	Nov-07	Nov-07	466,408.00
RESIDENTIAL BUILDING (B+G+8) DUBAI SILICON OASIS	MR. ISMAIL AQIL ABDUL RAHIM JANAHI	QHC ARCHITECS & ENG.	GCC CONTRACTING LLC	Nov-08	Nov-08	450,006.00
G+1 GROUP OF 10 VILLAS AT AL WARQAA FOURTH, DUBAI	GOVT. OF DUBAI, REAL ESTATE DEPT.	DESIGN CENTER CONSULTING ENGINEERS PVT LTD	BIN ZAYED CONTRACTING CO.	Oct-08	Dec-08	446,994.50
RESIDENTIAL BUILDING (B+G+2) JUMEIRAH 1ST, DUBAI	ABDULLAH AHMAD MOHD BIN FAHED		AL FAHED CONTRACTING CO.	Jul-12	Oct-12	445,880.00
RESIDENTIAL BUILDING (2B+G+15+P+RF) JUMEIRAH VILLAGE SOUTH CIRCLE, DUBAI	MR. EISA HUSSAIN AL YOUSUFI		UNITED SUPPLIES	Mar-09	Nov-09	436,845.50
RESIDENTIAL BUILDING DUBAI MARINA	MARINA VIEW TOWERS	ADNAN SAFFARINI ENGINEERING CONSULTANTS	AL NABOODAH CONTRACTING LLC	Jun-07	Dec-07	421,475.00
J373 MOTOR WORLD DEVELOPMENT PHASE 1 ALDAR PROPERTIES ABU DHABI	ALDAR PROPERTIES PJSC	AECOM ENGINEERING CONSULTANCY	AMANA CONTRACTING	Jan-11	Mar-11	420,355.57
COMMERCIAL & RESIDENTIAL BUILDING (B+G+1+GYM) MIRDIF, DUBAI		M/S DESIGN CENTER ARCHITECTS & ENGINEERING CONSULTANTS	SYSTEM CONSTRUCT (LLC)	Mar-10	Apr-10	410,804.00
8 VILLAS (G+1) DUBAI			LOUNGE CONSTRUCTION CO.	Jul-08	Dec-09	400,073.00
RESIDENTIAL BUILDING (G+14) SHARJA	DR. HAMDY HIJAZY	MAZAYA CONSULTING ENGINEERS	ARAM CONSTRUCTION	Dec-07	Dec-07	400,000.00
RESIDENTIAL BUILDING DUBAI MARINA			KITCHEN WORLD	May-10	Aug-10	400,000.00

PROJECT NAME	CLIENT	CONSULTANT	CONTRACTOR	Year Started	Year Completed	VALUE
RESIDENTIAL BUILDING (B+G+14) AL BARSHA 1ST, DUBAI	MR. MOHD. HUSSAIN ALI YATEEM & ALI HUSSAIN ALI YATEEM	CIVIC DESIGN ENGINEERING SERVICES	NARESCO CONTRACTING	May-11	Jun-11	394,016.00
PRIVATE VILLA AL BARSHA & AL MARGHAM			MR. AHMAD ZAKARNEH	May-13	Aug-13	369,375.00
31 VILLAS (G+1) AL RASHIDIYA, DUBAI	H.H. THE RULERS OFFICE, REAL ESTATE DEPT.	M. AL SHEIKH MUBARAK	LOOTAH BUILDING & CONSTRUCTION	Oct-08	Dec-08	368,962.80
COMMERCIAL AND RESIDENTIAL BUILDING AL MAJAZ, SHARJA	ALI OBEID BAKHIT BEL RASHID	ADNAN SAFFARINI ENGINEERING CONSULTANTS	EASTERN INTERNATIONAL LLC	Apr-07	May-07	368,528.00
ZAYED HIGHER ORGANIZATION FOR HUMANITARIAN CARE, SPECIAL NEEDS	ZAYED HIGHER ORGANIZATION FOR HUMANITARIAN CARE,		ASQALAN GENERAL CONTRACTING LLC	May-11	Jan-12	368,000.00
RESIDENTIAL BUILDING (2B+G+12+GYM) AL NAHDA 2ND, DUBAI	MADYA BUTTI MUQREEN SULTAN	HIGH ART ENG. CONSULTANTS	JULFAR CONTRACTING	Sep-10	Dec-10	365,000.00
RESIDENTIAL BUILDING (G+14) ABU DHABI	AL OTAIBAH REAL STATE	CANADIAN OFFICE ENG. CONSULTANT	BEAMS CONTRACTING	Dec-07	Dec-07	351,700.00
AL REEM PLAZA ABU DHABI	MR. AWAD MOHAMED KHALAF AL OTAIBAH	HELAL AND PARTNERS CONSULTANTS	SEIDCO GENERAL CONTRACTING CO. LLC	Jul-07	Jul-07	350,000.00
RESIDENTIAL BUILDING (G+12) AL QUASAIS, DUBAI	MR. AHMAD, MUKHTAR, NABIL & FAISAL ABNA ALI MUKHTAR	AL WAHA ENGG. CONSULTANTS	GOLDLINE CONTRACTING LLC	Mar-07	Apr-07	345,000.00
RESIDENTIAL TOWER (G+25+HC) DUBAI SILICON OASIS	SHEIKH KHALED ZAYED SAQER AL NEHYAN	ADNAN SAFFARINI ENGINEERING CONSULTANTS	BIN ZAYED CONTRACTING CO.	Jan-08	Jun-08	338,352.00
COMMERCIAL BUILDING (2B+G+9) PORT SAEED, DUBAI	DR. MOHAMMAD KHALFAN KHIRBASH ABDULLA (EMIRATES NATIONAL CONSTRUCTION)	M/S DESIGN & ARCHITECTURE BUREAU	SUMER CONTRACTING CO. LLC.	Jun-10	Jul-10	336,450.00
COMMERCIAL & RESIDENTIAL BUILDING (2B+G+4+R) AL KARAMA, DUBAI	M/s BEL JAFILA REAL ESTATE	ARAB EXPERTS ENGINEERING CONSULTANTS	AL SHAFAR CIVIL ENGINEERING LLC	Jan-12	Jul-12	334,552.00
RESIDENTIAL BUILDING AL MANKHOOL, DUBAI	MR. A.A. HASAN		DUBAI CONTRACTING COMPANY	Aug-06	Aug-06	321,582.00
8 VILLAS (G+1+GARAGE+BW) JUMIERAH 1ST, DUBAI			AL FAHED CONTRACTING CO.	Aug-12	Dec-12	320,000.00
GASCO ASAB ACCOMMODATION FACILITIES PHASE-1, ABU DHABI	ABU DHABI INDUSTRIES LTD. (GASCO)		GRANITE CONSTRUCTION CO.	Mar-08	Oct-08	319,200.00
RESIDENTIAL BUILDING AL BARSHA, DUBAI	AL WALEED REAL ESTATE	DESIGN CENTER CONSULTING ENGINEERS PVT LTD	BIN ZAYED CONTRACTING	Jan-07	Jun-07	316,558.00
RESIDENTIAL BUILDING (G+8)	AMADH ABDULAH ALI AL SHAFAR	AL ASRI ENGINEERING CONSULTANTS	AL SHAFAR TRANSPORT & CONTRACTING CO. LLC	Aug-07	Nov-07	312,098.00
4 VILLAS (ALHARTHY) AL AIN	MR. AHMAD ALI AL HARTHY		TAWAM UNITED ENTERPRISES	Apr-09	Jun-09	310,000.00
PRIVATE VILLA (KHALED KALBAN) DUBAI	KHALID JASSIM MOHAMMAD BIN KALBAN	M/S DEWAN AI EMARA ARCHITECT & ENGINEERS	FUJAIRAH NATIONAL CONSTRUCTION CO. LLC - KBK VILLA	Jun-11	Nov-11	293,986.00
4 PRIVATE VILLAS AL MIZHAR 2ND, DUBAI			CJ TECH CONTRACTING	Jan-13	Jun-13	290,000.00
RESIDENTIAL BUILDING G+6 AL HAMEEDYEH, AJMAN, UAE	MR. HAZEM ABU NABA'A	MEMMAR EMIRATES	JEIKOR CONTRACTING CO.	Sep-08	Sep-08	275,000.00
RESIDENTIAL BUILDING (G+7) AL MANKHOOL, DUBAI	AL WALEED REAL STATE	DESIGN CENTER CONSULTING ENGINEERS PVT LTD	BIN ZAYED CONTRACTING	Feb-07	Mar-07	274,200.00
12 VILLAS IN MIRDIF, DUBAI	MOHD. ABD AL KARIM AL ZAROONI	AL KHAWAJAH ENGG. CONSULTANCY	AL MERSAL	Jun-07	Jun-07	272,500.00
2B + G + 12 STOREY RESIDENTIAL BLDG AT AL NAHDA SECOND	AL NAHDA SECOND	ARCHON ENGINEERING CONSULTANTS	ASTECO	May-07	May-07	258,016.00



PROJECT NAME	CLIENT	CONSULTANT	CONTRACTOR	Year Started	Year Completed	VALUE
COMMERCIAL AND RESIDENTIAL BLDG. AT AL KARAMA, DUBAI, PHASE 1	H.H. THE RULER OF DUBAI	AL TURATH ENGINEERING CONSULTANTS	BELHASA ENT. & CONT. CO. LLC	May-06	Oct-06	250,393.05
RESIDENTIAL BUILDING FOR AT AL RAFFA, DUBAI, U.A.E.	ABDUL RAHMAN MOHD. TAHER WALI	AL AJMI ENGG. CONSULTANT	AB BUILDING CONTRACTING	Oct-06	Oct-06	250,000.00
G+12 RESIDENTIAL BLDG. AT AL NAHDA SECOND, DUBAI	PROPERTIES SONS of ALI MUKHTAR HASSAN AL YOUSUF	AL WAHA ENGG. CONSULTANTS	CIVIC BUILDERS	Jun-07	Jun-07	210,000.00
G+1 VILLA AT AL MAMZAR FOR MS. AMAL QASSIM SULTAN	MS. AMAL QASSIM SULTAN		SULTAN ABDUL RAHMAN CONTRACTING COMPANY	Nov-10	Nov-10	204,466.00
(GROUND+1+SERVICE BLOCK) 6-VILLAS FOR MR. SAIF AL OTAIBAH AT KHALIFA BIN ZAYED CITY, ABU DHABI	MR. SAIF AL OTAIBAH	AMERICAN CONSULTANT	AL OTAIBAH REAL ESTATE	Oct-09	Feb-10	203,207.00
6 VILLA	SHEIK SUHAIL AL OTAIBA	CANADIAN OFFICE ENG. CONSULTANT	IBDA AL KHALIEJ	Sep-07	Sep-07	200,311.50
2B+G+6+GYM BLDG. IN AL BARSHA FIRST PLOT NO. 373-109	PROPERTIES SONS of ALI MUKHTAR HASSAN AL YOUSUF	AL ASRI ENGINEERING CONSULTANTS	KHALFAN AL SHAER CONT. LLC	Mar-08	Mar-08	197,078.00
SUPPLY & INSTALLATION OF STARON VANITY COUNTER			ABU DHABI SUPPLIES & COMMERCIAL SERVICES EST.	Feb-11	Apr-11	191,073.00
SUPPLY & INSTALLATION OF STARON VANITY COUNTER			PARADOSSO 7	Jun-11	Jul-11	187,500.00
17 VILLAS AT JUMEIRAH II, DUBAI	DUBAI REAL ESTATE DEPT.	AL MAJAL CONSULTANT	AL SARH CONTRACTING	Mar-07	Mar-07	175,527.15
PENTHOUSE PLOT S6-C08 MANGROVE PLACE DEVELOPMENT SHAMS, ABU DHABI - AL REEM ASLAND	M/s. LUXURY REAL ESTATE DEVELOPMENT LLC	M/s. URBANISM PLANNING ARCHITECTURE CONSULTANCY LLC	GULF TECHNICAL CONSTRUCTION COMPANY LLC	Aug-12	Aug-12	171,145.00
G+7 RESIDENTIAL BLDG. AT AL MANKHOL, DUBAI	MR. MOHAMMED SHARIF BUKHASH	ADNAN SAFFARINI ENGINEERING CONSULTANTS	SALEH CONSTRUCTIONS	Dec-06	Dec-06	167,000.00
LEGEND PLAZA RES'1 APARTMENTS ON PLOT NO. 125-170, RIGGAT AL BUTEENA, DUBAI			BIN LADIN CONTRACTING	Mar-10	Mar-10	164,126.00
Dubai CONSTRUCTION OF (G+2P+3)OFFICE BLDG. & OTHER ASSOCIATED BLDG. AT AL WARSAN 2ND, ON PLOT NO. 622-159, DUBAI	GAO JINPING	ARCHDOME CONSULTING ENGINEERS	CHINA RAILWAY 18TH BUREAU GROUP LLC	Nov-12	Dec-12	156,440.00
14 VILLAS IN MIRDIF, DUBAI	MR. MOHD. TAMIM	AL KHAWAJAH ENGG. CONSULTANCY	MARWA ASKAR	Jun-09	Jun-09	154,000.00
ALGERIAN EMBASSY, QATAR			ALGERIAN EMBASSY, QATAR	Nov-11	Dec-11	133,693.00
G+1 3-VILLAS ON PLOT NO. 332-419 AT JUMEIRAH 1ST, DUBAI			AL FAHED CONTRACTING CO.	Oct-10	Oct-10	130,000.00
(B+G+2TYPICAL FLOORS) RES'L BLDG. ON PLOT NO. 3321505 AT JUMIERAH 1ST, DUBAI	MR. ABDULLAH AHMAD MOHD BIN FAHED		AL FAHED CONTRACTING CO.	Sep-11	Sep-11	126,500.00
GAYATHI POLICE STATION FOR ABU DHABI POLCE	ABU DHABI POLICE		AL BADR CONTRACTING & CIVIL CONSTRUCTION CO. LLC	Apr-11	Apr-11	121,750.00
MEDICAL SERVICES ADM. CLINICS - ABU DHABI POLICE - MINOR V, ABU DHABI			KHARAFI NATIONAL	Aug-10	Aug-10	120,000.00
AL RUWAIS POLICE STATION, ABU DHABI			ASWAR ENGINEERING & GENERAL CONTRACTING CO. LLC	Mar-11	Mar-11	120,000.00
AL HAYER POLICE STATION, ABU DHABI			ASWAR ENGINEERING & GENERAL CONTRACTING CO. LLC	Apr-11	Apr-11	120,000.00
AL MADINA POLICE STATION - AL AIN			AL ESLAH GENERAL CONTRACTING	Nov-12	Dec-12	118,000.00
LIWA REST HOUSE - WESTERN AREA, ABU DHABI	SHK.HAMDAN	HEBERGER ENGINEERING	GHANTOOT TPT & GEN. CONT. EST.	Oct-12	Oct-12	117,000.00

PROJECT NAME	CLIENT	CONSULTANT	CONTRACTOR	Year Started	Year Completed	VALUE
CONTRUCTION, COMPLETION OF HIGH WAY TRAFFIC & PATROL DEPARTMENT AT AL MAFRAQ, ABU DHABI	ABU DHABI POLICE, GHQ	BAINONA CONSULTING ENGINEER	GHANTOOT TPT & GEN. GENERAL CONTRACTING EST	Jul-11	Oct-11	115,000.00



الميرة  
almeera

مطابخ . خزائن . مغاسل  
Kitchens . Wardrobes . Vanities



www.finsa.es

## Finsa Melamine Faced Medium Density Fiberboard

### Description

Fibraplast is obtained from overlaying Finsa MDF with special papers impregnated with synthetic resins. The bonding process can be on either one or two sides and is carried out in special presses at high temperatures. The decorative papers used for overlaying are generally classified into the following categories: whites, solid colour, woodgrain designs and abstracts.

### Application

Modern design-led furniture has developed thanks to Fibraplast. The MDF base can be easily moulded and shaped thus enabling all kinds of geometric effects. The finished furniture products are widely seen in conference and hotel furniture, teenager and children bedroom furniture as well as in hi-fi accessories.

Another field where the advantages are highlighted is in reproduction furniture. The high gloss finish combined with matching, tinted moulded edges enables the furniture manufacturer to supply a classic piece of furniture but in an alternative material to endangered, expensive, exotic timber species. Nevertheless, it is in the kitchen and bathroom furniture fronts where Fibraplast has become most widely used. Both in doors with matching wrapped mouldings or in flat doors Fibraplast can be used to ensure the perfect finish.

CHARACTERISTICS	PROPERTIES OR FEATURES	UNITS	TYPES OF APPLICATION	
			IA	VA
ABRASION RESISTANCE	RESISTANCE TO WEAR	MINIMUM REVOLUTIONS	50	100
DRY HEAT RESISTANCE	APPEARANCE/SHINE	GRADE NO LESS THAN	3	4
DIMENSIONAL STABILITY	DIMENSIONAL MOVEMENT	% MAX (LENGTH)	0.35	0.35
		% MAX (WIDTH)	7.00	7.00
IMPACT RESISTANCE	HEIGHT OF BALL DROP DIAMETER MARK	(m) MIN	0.60	0.60
		(MM) MAX	10.00	10.00
CRACKING RESISTANCE	POSSIBILITY	GRADE NO LESS THAN	3	3
SCRATCH RESISTANCE	FORCE	(N) MIN	1.00	1.50
STAIN RESISTANCE	APPEARANCE	GRADE NO LESS THAN		
	GROUP 1 & 2		4	5
	GROUP 3 & 4		3	4
FADING RESISTANCE	SCALE OF BLUES	MINIMUM	*NA	6
CIGARETTE BURN RESISTANCE	APPEARANCE	GRADE NO LESS THAN	*NA	3
STEAM RESISTANCE	APPEARANCE	GRADE NO LESS THAN	3	4

### Types of Applications

VA: Vertical applications and moderately used horizontal applications

IA: Vertical applications less demanding than type VA (eg. Back panels)





www.finsa.es

## Finsa Moisture Resistant Medium Density Fiberboard (MR-MDF)

### Description

Moisture resistant MDF is a board with improved resistance to moisture for interior applications involving only short term exposure to high relative humid atmosphere.

It is manufactured by upgrading with melamine the normally used area formaldehyde resin binder. All the desirable properties of the standard MDF are retained in these boards with the added advantage of a higher level of strength retention and less swelling when used in extreme interior condition.

### Properties

Greater dimensional stability, flat surface, low absorption on molded edges and surface and high mechanical properties.

### Advantages

These boards are characterized by the excellent curing of the resins in their core and uniform distribution of wood fibers, which result in important advantages, such as machinability, reduction of tool wear, better profiles of the core and reduction of finishing costs.

TEST METHOD	PROPERTIES	UNITS	THICKNESSES mm							
			>2.5/4	>4/6	>6/9	>9/12	>12/19	>19/30	>30/45	>45/60
EN 323	DENSITY (*)	Kg/m3	820/810	810/800	800/770	770/730	730/700	700/675	730/675	700/650
EN 319	INTERNAL BOND Dry	N/mm2	0.9	0.85	0.8	0.8	0.75	0.75	0.7	0.65
EN 321	INTERNAL BOND Residual (Option 1)	N/mm2	0.35	0.35	0.3	0.25	0.2	0.15	0.1	0.1
EN 310	BENDING STRENGTH	N/mm2	38	38	37	32	30	28	27	25
EN 310	MODULUS OF ELASTICITY	N/mm2	2.7	2.7	2.7	2.7	2.7	2.3	2.2	2
EN 317	THICKNESS SWELLING 24 H	%	25	18	12	10	8	7	7	6
EN 321	THICKNESS SWELLING Permanent	%	40	25	19	16	15	15	15	15
EN 322	MOISTURE CONTENT	%	7+/-3	7+/-3	7+/-3	7+/-3	7+/-3	7+/-3	7+/-3	7+/-3
EN 318	DIMENSIONAL MOVEMENT Length/width	%	0.4	0.4	0.4	0.4	0.4	0.3	0.25	0.25
EN 318	DIMENSIONAL MOVEMENT Thickness	%	10	10	6	6	6	5	5	5
TOLERANCE ON NOMINAL DIMENSIONS										
EN 324-1	Thickness	MM	+/-0.2	+/-0.2	+/-0.2	+/-0.2	+/-0.2	+/-0.3	+/-0.3	+/-0.3
EN 324-1	Length and width	MM	+/- 2 mm/m max +/- 5 mm.							
EN 324-2	Squareness	MM	+/- 2 mm/m .							
EN 324-2	Edge straightness	MM	+/-1.5 mm/m .							
EN 320	SCREW HOLDING Edge	N	—	—	—	—	800	750	700	700
EN 320	SCREW HOLDING Face	N	—	—	—	—	1	1	1	1
EN 311	SURFACE SOUNDNESS	N/mm2	1.2							
ISO 3340	GRIT CONTENT	% Weight	Max. 0.05							
EN 382-1	SURFACE ABSORPTION	MM	>150 mm. (both faces)							

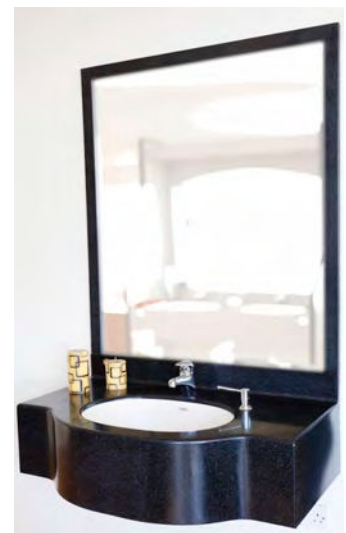
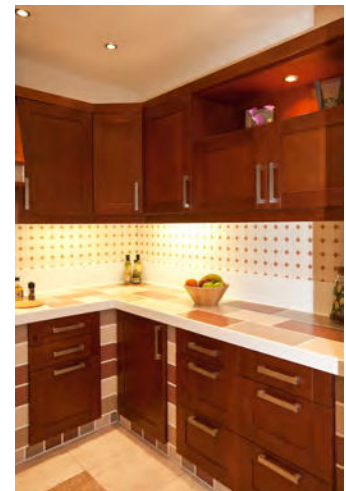


www.staron.com

## Staron Solid Surface 100% Acrylic

### Technical Properties

PROPERTIES	TYPICAL RESULTS	TEST PROCEDURE
Tensile strength	6,000 psi	ASTM D 638
Tensile modulus	600,000 psi	ASTM D 638
Flexural strength	10,000 psi	ASTM D 790
Flexural modulus	1,000,000 psi	ASTM D 790
Elongation	0.5%	ASTM D 638
Hardness	92 Rockwell "M" Scale	ASTM D 785
	65 Barcol Impressor	ASTM D 2583
Thermal expansion	$2.0 \times 10^{-5}$ in/in F°	ASTM D 696
Gloss (60 Gardner)	Between 5 - 20	NEMA LD-3
Color stability	No change-200hrs	NEMA LD-3
Stain resistance	Pass	ANSI Z 124
	Rating 41	
Abrasion resistance	Pass	ANSI Z 124
Boiling water surface resistance	No effect	NEMA LD-3
High temperature resistance	No effect	NEMA LD-3
IZOD Impact resistance (notched)	0.28 ft.lbf/in	ASTM D 256
Ball drop	144" w/ 1/2 lb ball, No failure	NEMA LD-3
1/2"(12.3 mm) sheet		
Fungi and Bacterial resistance	No growth	ASTM G 21, G22
Specific gravity		ASTM D 792
Solid colors	1.72	
Pattered colors	1.69	
Water absorption	0.04%, (1/2", 24hrs)	ASTM D 570
	0.11%, (1/8", 24hrs)	
Flammability	Class A / Class 1	UBC 8-1
Flame spread	10	ASTM E 84
Smoke density	10	ASTM E 84
Radiant heat resistance	No visual effect	NEMA LD-3
Toxicity	84.4g (Solid Color)	Pittsburgh Test Protocol
	81.8g (Patterned Color)	(LC50 Test)



مطابخ . خزائن . مغاسل  
Kitchens . Wardrobes . Vanities

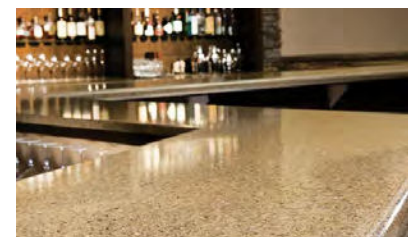
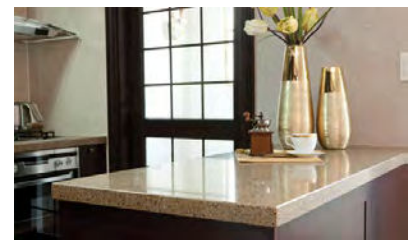


www.samsungradianz.co

## Radianz Quartz Surface

### Technical Properties

PROPERTIES	TYPICAL RESULTS	TEST PROCEDURE
Specific Gravity	2.41	ASTM D792-08
Water Absorption	0.03%	ASTM C373-06
Coefficient of Linear Thermal Expansion	$1.35 \times 10^{-5} / ^\circ\text{C}$	ASTM D696-03
Flexural Strength	53.6 Mpa	ASTM D790-07
Flexural Modulus	11.9 Mpa	ASTM D790-07
Boiling Water Resistance	No effect	NEMA LD3 2000 3.5
High Temperature	No effect	NEMA LD3 2000 3.6
Moh's Hardness	7	MOHS Hardness Scale
Slip Resistance	0.91 / 0.49	
Coefficient of Fiction	0.45 / 0.57	ASTM C1028-07
(Received: Dry/Wet)	1.03 / 0.49	
Slip Resistance	0.89 / 0.48	
Coefficient of Fiction	0.40 / 0.58	ASTM C1028-07
(Renovated: Dry/Wet)	0.92 / 0.50	
Compressive Strength	DRY: 213.74 Mpa WET: 251.16 Mpa	ASTM C170-09
Stain Resistance	Passes	ANSI Z124.6-07
Cigarette Test	Passes	ANSI Z124.6-07
Chemical Resistance	Passes	ANSI Z124.6-07
Impact Tests	Passes	ANSI Z124.6-07
Fungal Resistance	No effect	ASTM G21-96
Bacteria Resistance	No effect	ASTM G22-96
Rockwell Hardness	114	ASTM D785-03
Abrasion Resistance	606mg	ASTM D4060-07
Flammability	Class A	ASTM E84-09



### DISCLAIMER

The information contained herein is provided by Cheil Industries Inc. and its subsidiaries and affiliates (collectively referred to as "Samsung") for information purposes only and should be used by individuals with technical experience and knowledge in the area. Samsung does not make any representation or warranties of the usefulness or expected results of the information, and does not assume any responsibility whatsoever related to the use of the information. Exclusion of the implied warranties may not apply in certain jurisdictions.



www.huidongstone.com/en/

## Huidong Consturction Materials Co. Ltd.

### Granite Composition

Granite, the hard natural igneous rock having visible crystalline texture is formed essentially of quartz and orthoclase or microcline. The principal constituents of granite are feldspar, quartz and Biotite. However the percentage composition of each varies and accordingly impart different color and texture to the final product. The percentage composition of feldspar varies between 65-90% , of quartz can extend from 10 to 60% and that of biotite lies between 10 to 15%.

### Granite Physical Properties

In terms of its physical properties granite is a unique material. These properties lending uniqueness to granite are:

- **Porosity/permeability:** Granite has almost negligible porosity ranging between 0.2 to 4%.
- **Thermal stability:** Granite is highly stable thermally, therefore shows no changes with the change in temperature. Granite is impervious to weathering from temperature and even from the air borne chemicals. It is the high resistance to chemical erosion that makes granite useful for making tanks to store highly caustic material.
- **Co-efficient of expansion:** The co-efficient of expansion for granite varies from  $4.7 \times 10^{-6}$  –  $9.0 \times 10^{-6}$  (inch x inch).
- **Variegation:** Granite shows consistency in color and texture.
- **Hardness:** It is the hardest building stone and hardness of granite that lends it excellent wear.

### Granite Chemical Properties

Granite is primarily composed of feldspar, quartz along with various other minerals in varying percentage, which are stated as follows:

### Nominal chemical composition of various oxides

CHEMICAL	SYMBOL	PERCENTAGE
Silicon Dioxide	SiO <sub>2</sub>	70% - 77%
Aluminium Oxide	Al <sub>2</sub> O <sub>3</sub>	11% - 14%
Phosphorus Pentoxide	P <sub>2</sub> O <sub>5</sub>	3% - 5%
Sodium Oxide	Na <sub>2</sub> O	3% - 5%
Calcium Oxide	CaO	1%
Ferric Oxide	Fe <sub>2</sub> O <sub>3</sub>	1% - 2%
Ferrous Oxide	FeO	1% - 3%
Magnesium Oxide	MgO	0.5% - 1%
Titanium Dioxide	TiO <sub>2</sub>	0.38%
Water	H <sub>2</sub> O	0.03%





www.franke.com

## Franke Inset Sinks and Mixers

### Franke Single Lever Mixer

#### Model: Onda

Material : Brush, chrome electro plated  
Type : Ceramic cartridge  
Version : Single lever spout



### Franke Stainless Steel Sink

#### Model: Onda ONX 621

Type : Inset with 2 big bowl + 1 drainer  
Material : Stainless steel 304 ( 18/10 )  
Dimension : 1160mm x 500mm  
Waste Hole : 90mm with overflow system  
Drainer Format : Reversible



### Franke Stainless Steel Sink

#### Model: Onda ONX 651

Type : Inset with 1 big bowl +1 small bowl +1 drainer  
Material : Stainless steel 304 ( 18/10 )  
Dimension : 1000mm x 500mm  
Waste Hole : 90mm with overflow system  
Drainer Format : Reversible



### Franke Stainless Steel Sink

#### Model: Onda ONX 611

Type : Inset with 1 big bowl + 1 drainer  
Material : Stainless steel 304 ( 18/10 )  
Dimension : 860mm x 500mm  
Waste Hole : 90mm with overflow system  
Drainer Format : Reversible



### Franke Stainless Steel Sink

#### Model: Avvenire AIX 610

Type : Inset with 1 bowl  
Material : Stainless steel 304 ( 18/10 )  
Dimension : 420mm x 500mm  
Waste Hole : 90mm with overflow system  
Drainer Format : Reversible





www.franke.com

## Franke Cooker Hoods

### Franke Under Cabinet Hood

**Model: Traditional -1FTT 912 / 1FTT 612**

Material : Stainless steel  
Extraction Cap. : 180 m<sup>3</sup>/ hr  
Controls : Slide switch  
Dimension : 90 & 60cm



### Franke Under Cabinet Hood

**Model: Target- FTF 904XS / FTF604 XS**

Material : Stainless steel  
Extraction Cap. : 200 m<sup>3</sup>/ hr  
Controls : Push button switch  
Dimension : 90 & 60cm



### Franke Chimney Hood

**Model: Linfa- FDL 964XS**

Material : Stainless steel  
Extraction Cap. : 420 m<sup>3</sup>/ hr  
Controls : Push button switch  
Dimension : 90cm



### Franke Chimney Island Hood

**Model: Glass Linear- FGL 915 I XS**

Material : Stainless steel  
Extraction Cap. : 535 m<sup>3</sup>/ hr  
Controls : Soft touch  
Dimensions : 90cm





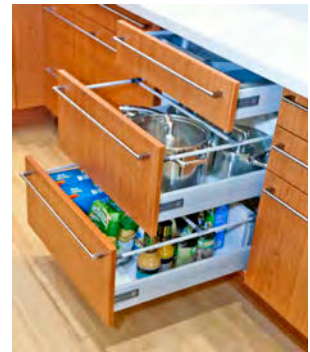
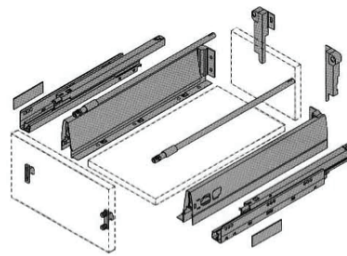
www.harn.com

## Harn Drawer Systems

### Kitchen Drawer System

TRIOMAX: Full Extension

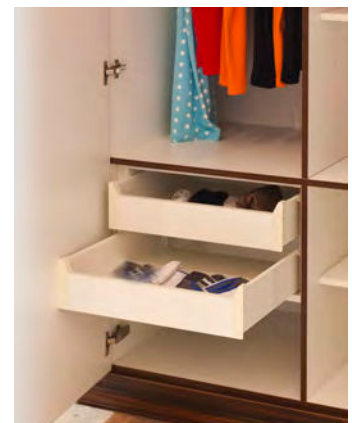
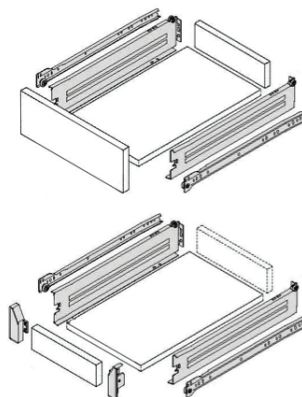
- > Roller bearing concealed runners
- > Full extension with synchro control
- > Load capacity of 50 kgs.
- > Flexible 2-dimentional front adjustment
- > Silent integrated cushioning system
- > Integrated Self-Aligning and Self-Engaging stabilizer
- > Metal epoxy coated



### Wardrobe Drawer System

IMPAZ: Single Extension

- > Load capacity of 30 kgs.
- > Flexible 2-dimentional front adjustment
- > Smooth rolling mechanism
- > Self closing features
- > Double out-stop safety feature
- > Locked-in position when extended
- > Metal epoxy coated



## Hinge and Plastic Components

### One Touch Furniture Hinge by Samsung Irex

- 110° opening angle
- Clip-on system for quick and easy assembly
- 3 dimensional adjustment
- Equip with 35° self closing mechanism



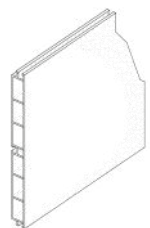
### Adjustable Cabinet Legs

- Load capacity 30 kgs/piece
- Easy to install
- Height adjustable from 14cm to 17cm
- Made from durable plastic



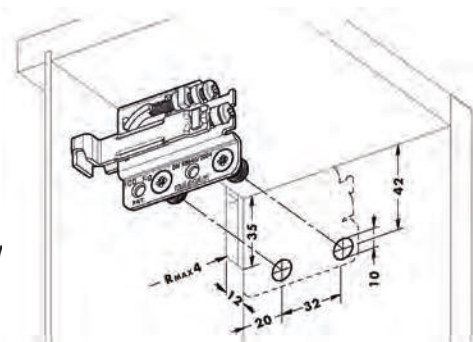
### PVC Skirting

- Color matching to color of door
- Detachable for easy access when cleaning area under cabinet
- Water proof
- Design specifically to match adjustable cabinet legs
- Made from durable plastic



### Cabinet Suspension Side Hanger

- Loading capacity of 100kg./pc
- For rail and hook suspension
- Adjustment Possibilities:
- Height: 25 mm
- Depth: max. 25 mm through patented depth adjustment screw
- Lift-off height: 7.5 mm



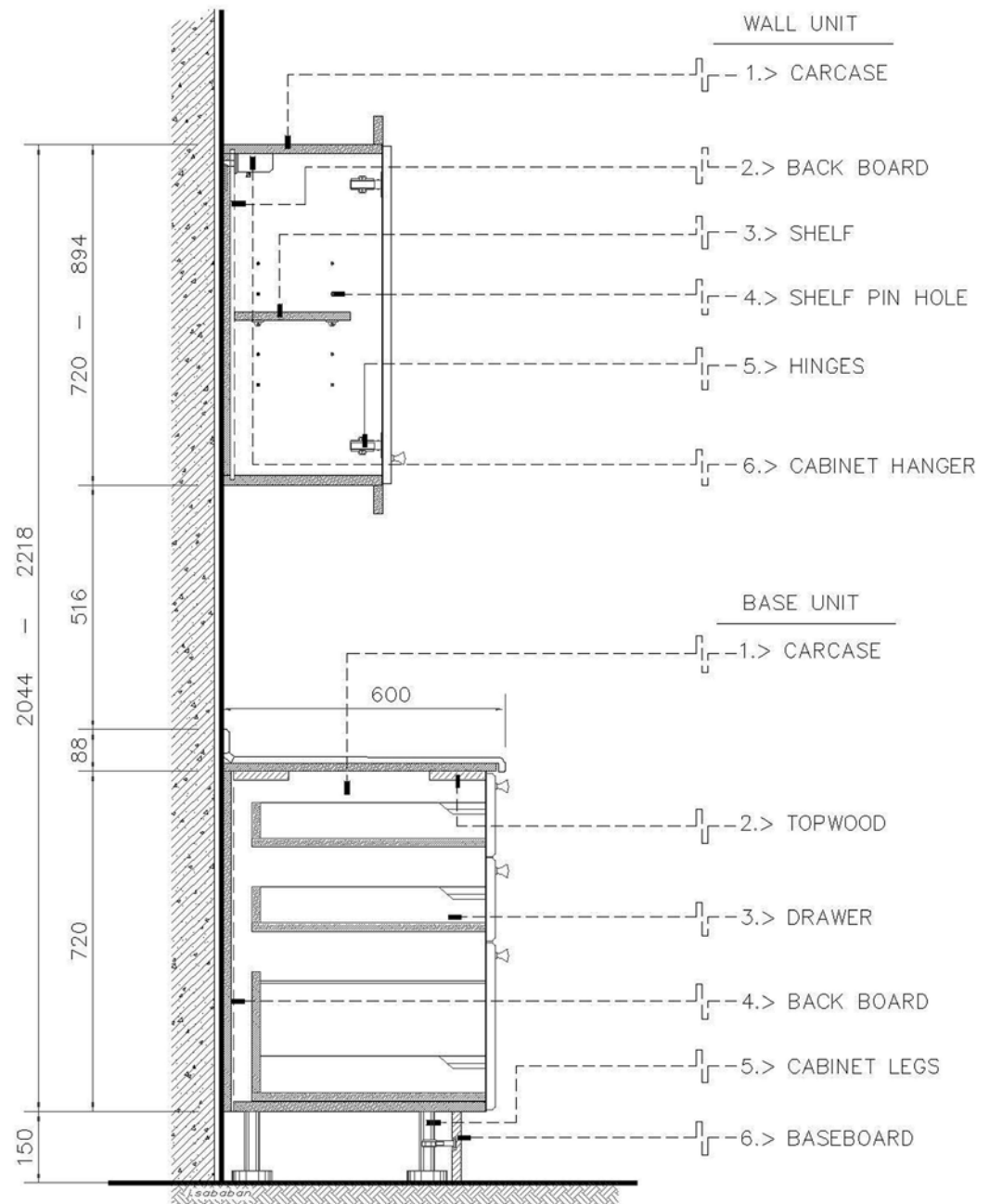


الميرة  
almeera

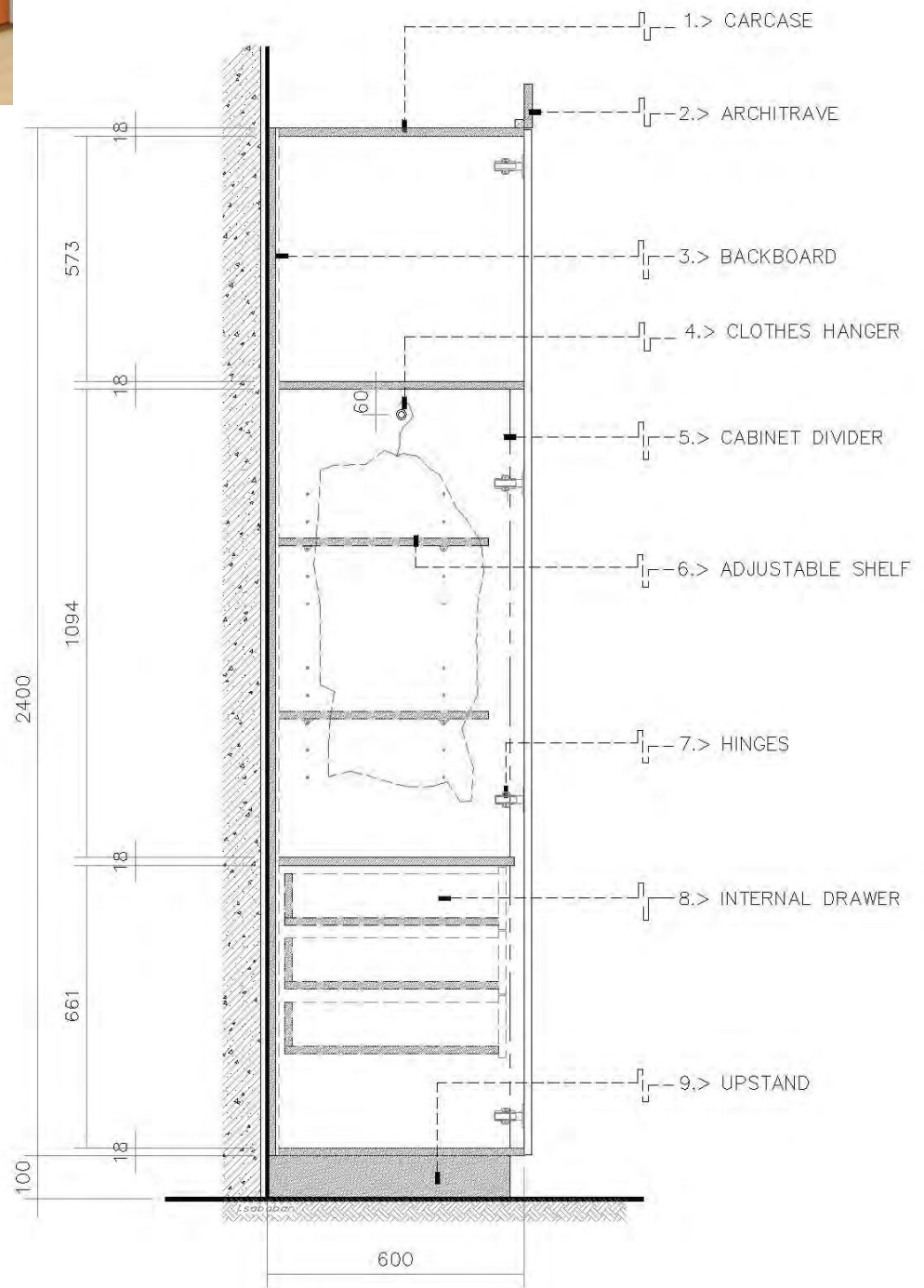
مطابخ . خزائن . مغاسل  
Kitchens . Wardrobes . Vanities



## Kitchen Cabinet Section



## Wardrobe Cabinet Section





الميرة  
almeera

مطابخ . خزائن . مغاسل  
Kitchens . Wardrobes . Vanities

## Dubai

## دبي

Head Office and Factory

المكتب الرئيسي و المصنع

T: 00971 4 3330722

ت: ٠٠٩٧١٤٣٣٣٠٧٢٢

F: 00971 4 3330018

ف: ٠٠٩٧١٤٣٣٣٠٠١٨

Showroom

المعرض

T: 00971 4 3391144

ت: ٠٠٩٧١٤٣٣٩١١٤٤

F: 00971 4 3394036

ف: ٠٠٩٧١٤٣٣٩٤٠٣٦

P.O.Box 49252 Dubai, UAE

ص.ب. ٤٩٢٥٢ دبي، أ.ع.م

info.dubai@almeera.me

info.dubai@almeera.me

الرقم المجاني toll free 8001199

## Abu Dhabi

## أبو ظبي

Showroom

المعرض

T: 00971 2 6311013

ت: ٠٠٩٧١٢٦٣١١٠١٣

F: 00971 2 6311772

ف: ٠٠٩٧١٢٦٣١١٧٧٢

P.O.Box 34788 Abu Dhabi, UAE

ص.ب. ٣٤٧٨٨ أبوظبي، أ.ع.م

info.ad@almeera.me

info.ad@almeera.me

[www.almeera.me](http://www.almeera.me)



/almeera.kitchens

## Al Doha, Qatar

## الدوحة، قطر

Showroom

المعرض

T: 00974 4416 4888

ت: ٠٠٩٧٤٤٤١٦٤٨٨٨

F: 00974 4434 0644

ف: ٠٠٩٧٤٤٤٣٤٠٦٤٤

P.O.Box 202105 Doha, Qatar

ص.ب. ٢٠٢١٠٥ الدوحة، قطر

info.qatar@almeera.me

info.qatar@almeera.me